



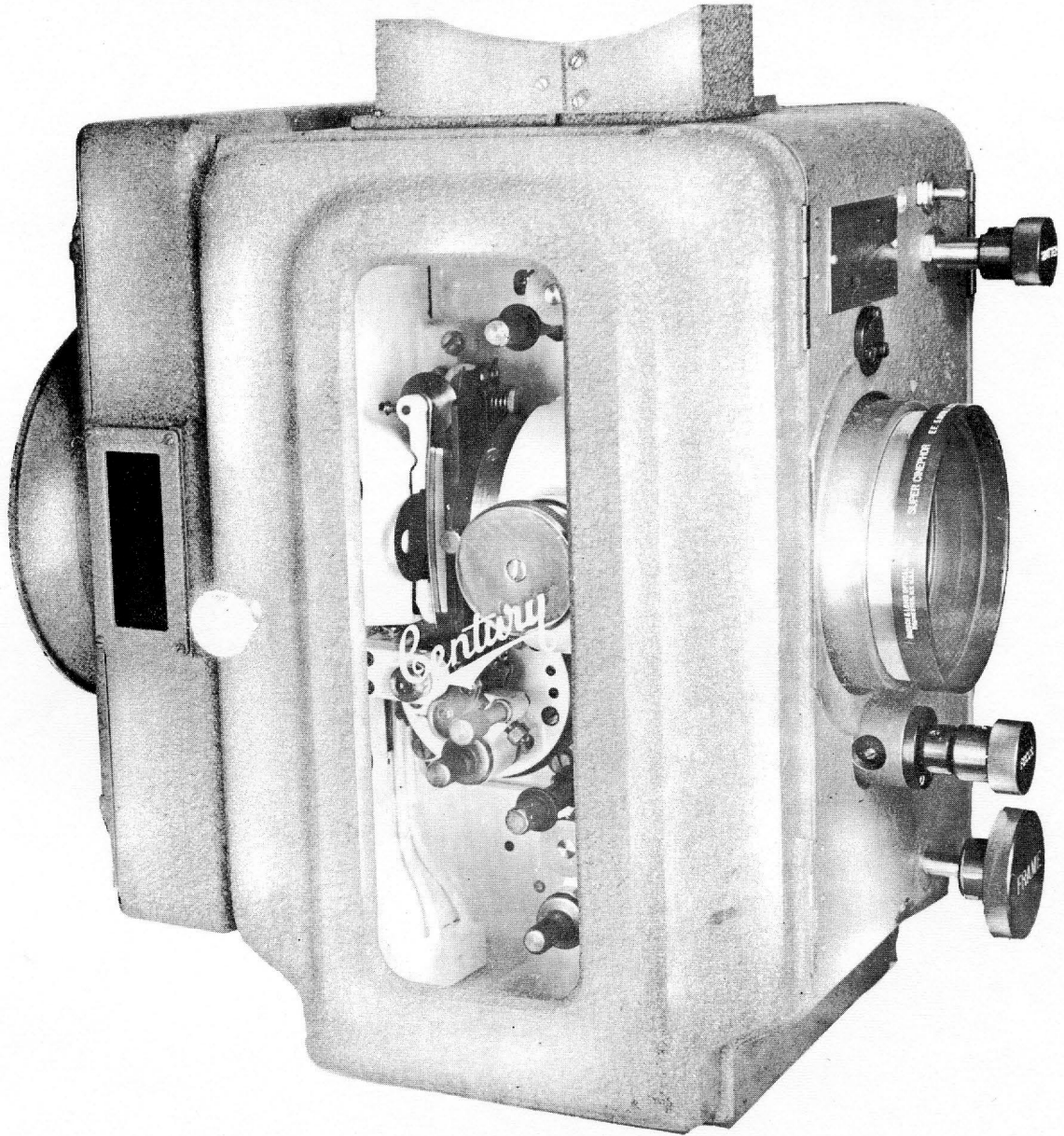
PROJECTOR MECHANISMS
PARTS LIST

CENTURY PROJECTOR CORPORATION

NEW YORK 19, N. Y.

Century

The Modern Projector



CENTURY PROJECTOR CORPORATION

165 West 46th Street, New York, New York 10036

PRECISION - MADE



for

**MODELS SB-DB AND SA-DA SERIES
PROJECTOR MECHANISMS**

CENTURY PROJECTOR CORPORATION

A DIVISION OF UNITED INDUSTRIAL SYNDICATE, INC.

165 West 46th Street, New York, New York 10036

PRINTED IN U.S.A.

Contents

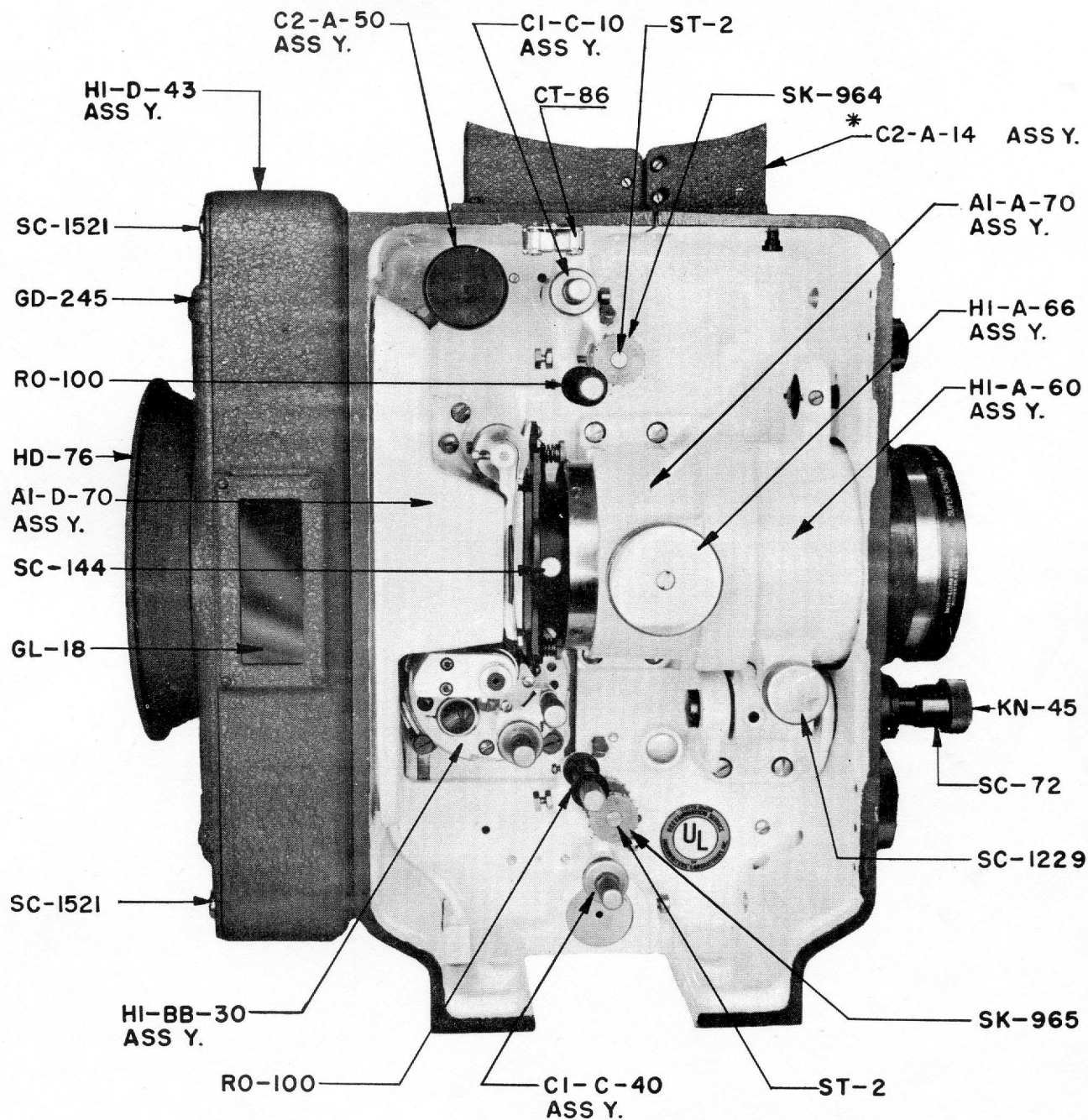
PAGE NUMBER

ILLUSTRATIONS - MAIN ASSEMBLIES - PARTS	4-5-6-7-8
MAIN FRAME PARTS - (DRIVE & OPERATING SIDES)	9
OPERATING & DRIVE-SIDE DOORS	9
FIRE TRAP ROLLER HOLDER - FRAMING SHAFT	10
INTERMITTENT CARRIAGE & SHUTTER ADJUSTMENT	10-11
PILOT LAMP - LENS MOUNT	11-12
FILM GATE SUPPORT BRACKET & LOCK KNOB (STANDARD/CINE-FOCUS)	12-13
UPPER ROLLER HOLDER - HEAT FILTER (CINE-FOCUS)	13
INTERMITTENT MOVEMENT	14-15
UPPER PAD ROLLER ARM - LOWER PAD ROLLER ARM	16
UPPER SPROCKET SHAFT - LOWER SPROCKET SHAFT	16
SINGLE SHUTTER SHAFT - SHUTTER BLADES - SHUTTER GUARDS	16-17-18
DOUBLE SHUTTER SHAFT - SHUTTER BLADES & HUBS	19-20-21
AUTOMATIC FIRE SHUTTER - LIGHT SHIELD - FILM TRAP	21
LATERAL GUIDE ROLLER - FILM GATE (REGULAR/CINE-FOCUS)	22
FILM TRAP SUPPORT/HEAT SHIELD (STANDARD)	22
FILM TRAP SUPPORT/WATER-CELL - APERTURE PLATES	22
GOVERNOR/VERTICAL SHAFTS (STANDARD & DIRECT DRIVE)	23-24
MAIN DRIVE SHAFTS (STANDARD AND DIRECT DRIVE)	24
CONVERSION KITS - TAKE-UP MAGAZINE MOTOR DRIVE	24-25-26
CINE-FOCUS AIR PUMP - LENS BUSHING - WATER RECIRCULATOR	26-27-28
FRONT LENS SUPPORT - LOCATE RING - CONVERSION KIT	28
<u>PARTS AND ASSEMBLIES</u> FOR FORMER MODEL MECHANISMS (C/CC-H/HH)	29 TO 35
ILLUSTRATIONS - INTERMITTENT SPROCKET PAD ASSEMBLIES	36

NOTES:

"ASS Y." DENOTES COMPLETE ASSEMBLY - NOT A PART.
CONSULT PARTS BOOK FOR DESCRIPTION AND
CODE NUMBERS OF COMPONENTS.

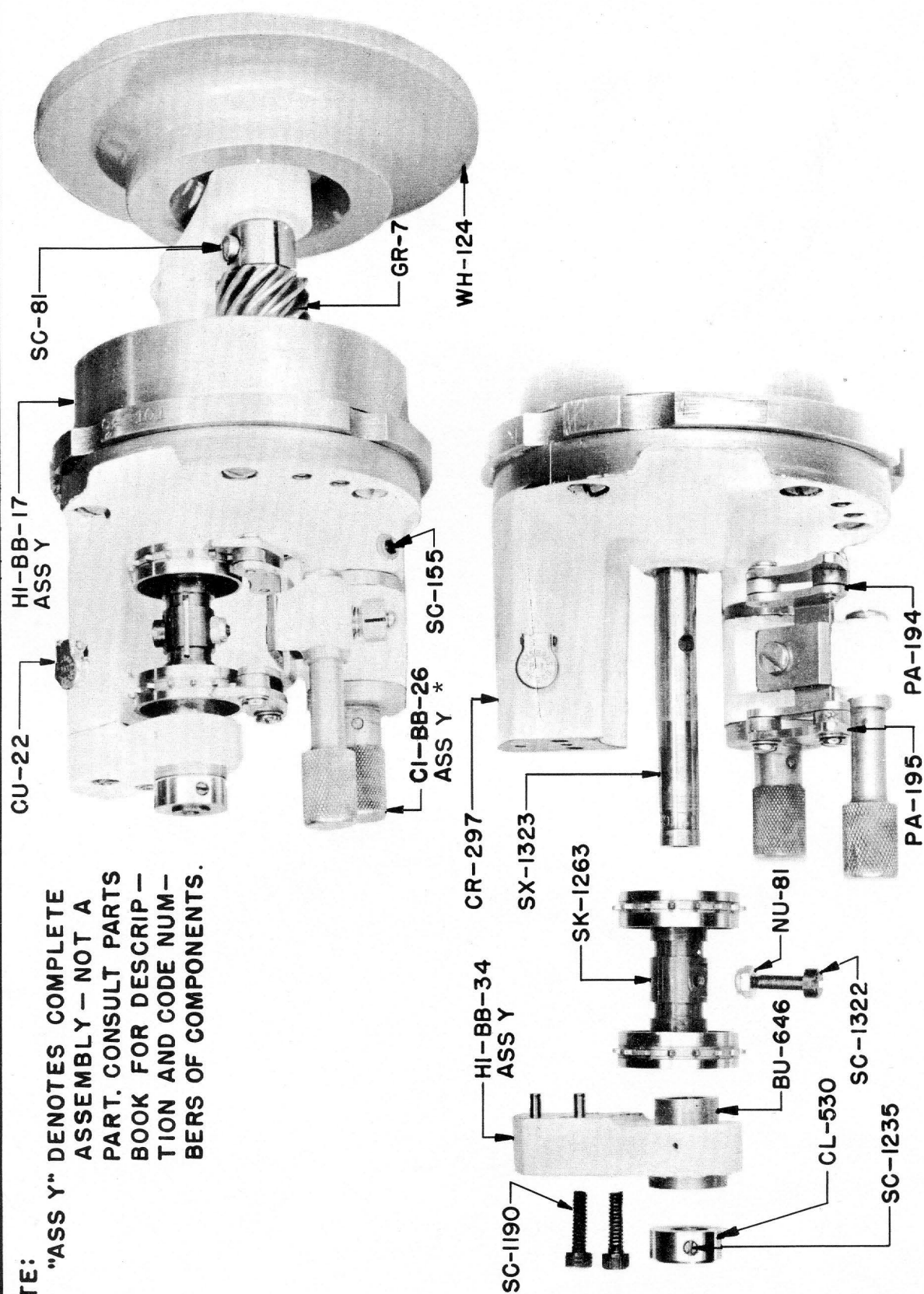
* C2-A-14 FIRE TRAP (FOR NITRATE FILMS)
CI-A-70 ROLLER HOLDER (FOR SAFETY FILMS)



OPERATING-SIDE

NOTE:

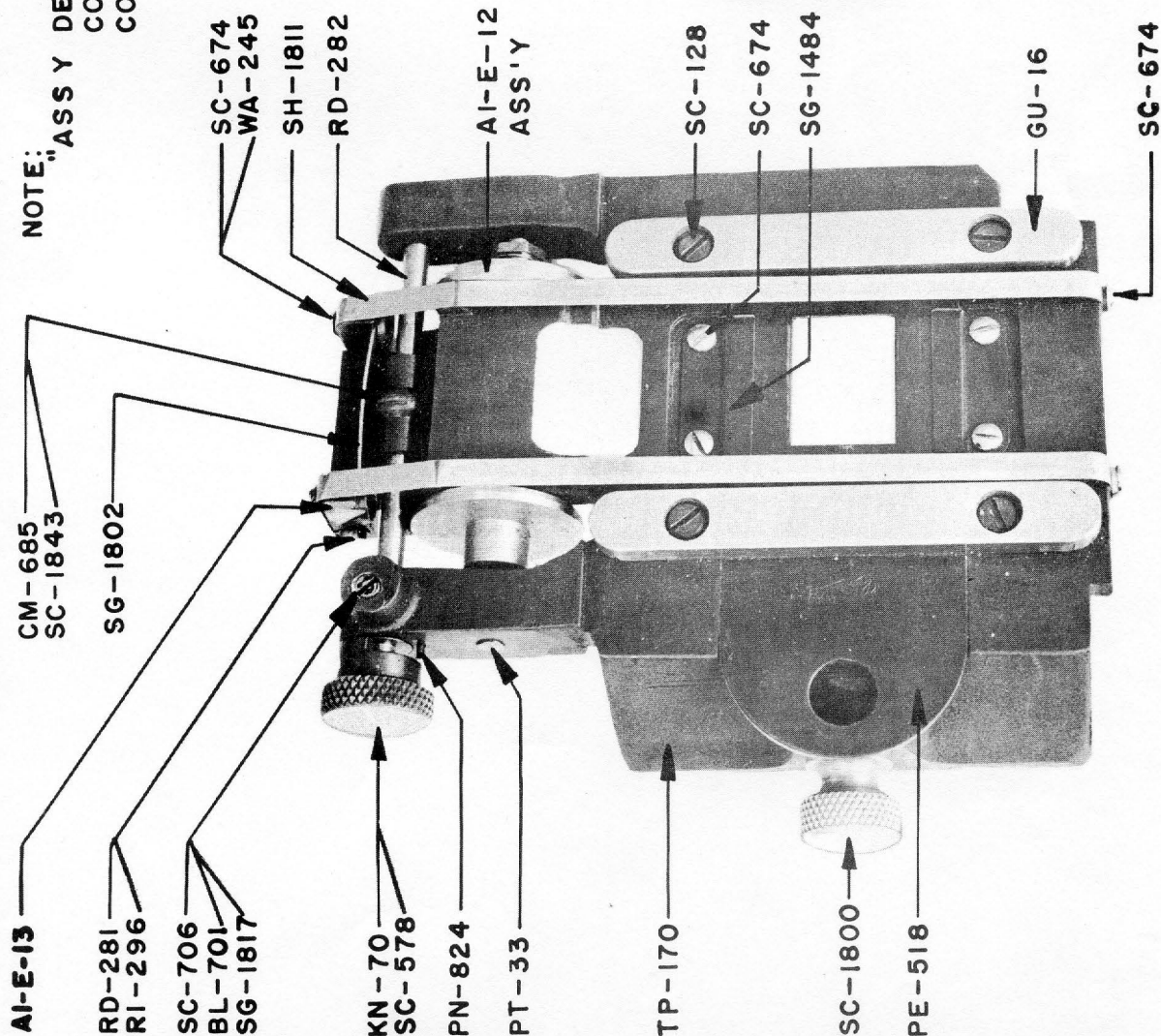
"ASS Y" DENOTES COMPLETE ASSEMBLY - NOT A PART. CONSULT PARTS BOOK FOR DESCRIPTION AND CODE NUMBERS OF COMPONENTS.



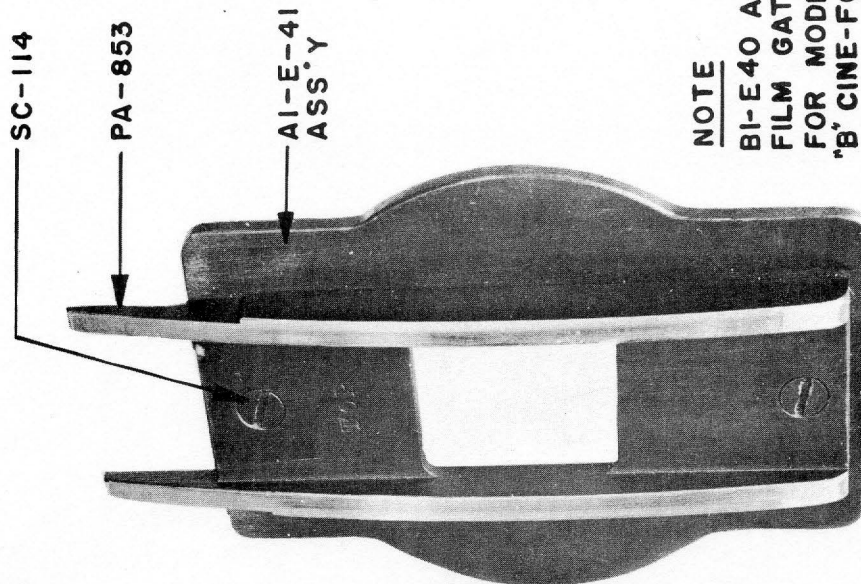
**INTERMITTENT MOVEMENT
(HI-BB-30 ASS Y)**

* REFER TO PAGE #36 FOR ILLUSTRATION OF CI-BB-26 ASSY.

NOTE: "ASS Y DENOTES COMPLETE ASSEMBLY—NOT A PART.
CONSULT PART BOOK FOR DESCRIPTION AND
CODE NUMBERS OF COMPONENTS.

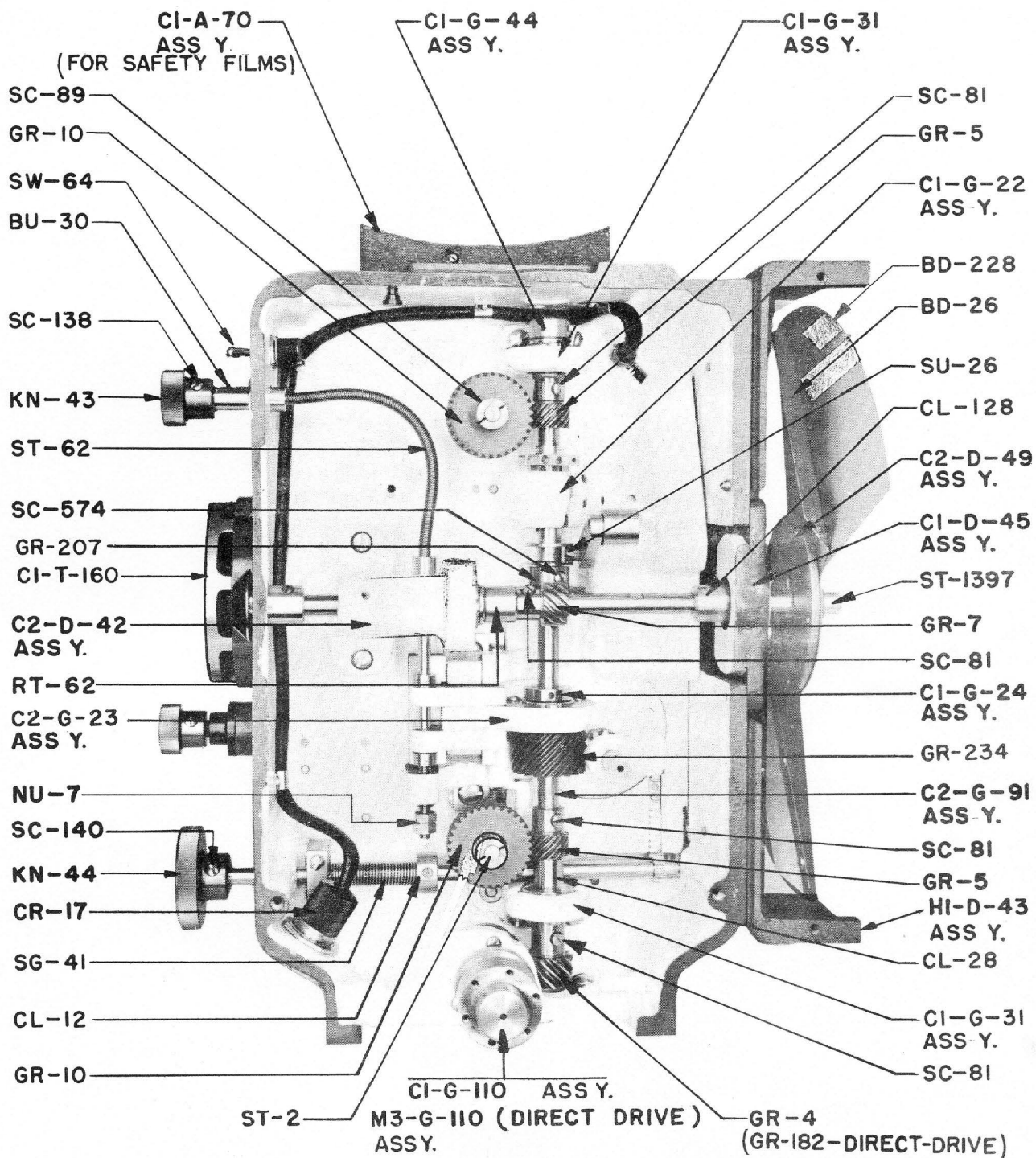


AI-E-10 ASS Y
FILM TRAP



AI-E-40 ASS Y
FILM GATE

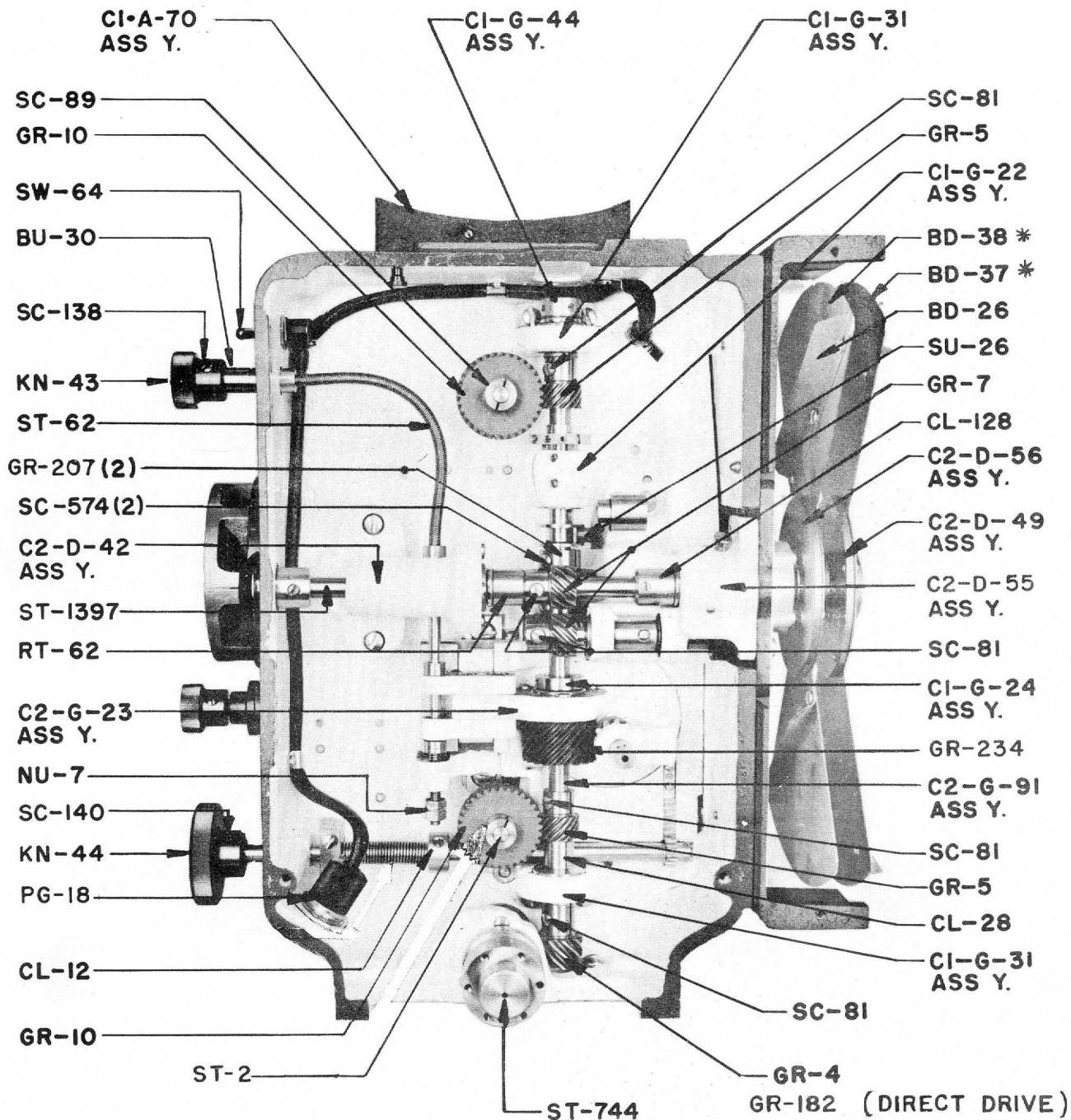
NOTE
BI-E40 ASS'Y
FILM GATE
FOR MODEL
"B" CINE-FOCUS
MECHANISM.



**SINGLE-SHUTTER
(DRIVE - SIDE)**

NOTE:

"ASS Y." DENOTES COMPLETE ASSEMBLY-NOT A PART.
CONSULT PARTS BOOK FOR DESCRIPTION AND
CODE NUMBERS OF COMPONENTS.



DOUBLE-SHUTTER (DRIVE-SIDE)

NOTES:

DDS - SHUTTERS - C2-D-58 (OUTER) / C2-D-59 (INNER) (IN DOOR)
 DDS - SHUTTERS - C4-D-58 (INNER) / C4-D-59 (OUTER) (DRIVE-IN)

"ASSY." DENOTES COMPLETE ASSEMBLY - NOT A PART
 CONSULT PARTS BOOK.

PART NO.	DESCRIPTION	
<u>MAIN FRAME PARTS - DRIVE AND OPERATING SIDES)</u>		
C1-A-11	Door Hinge and Pin Assembly (4)	
J3-A-130	Air Retaining Tube Assembly (Cine-Focus)	
BU-29	Bushing	Sprocket Shaft Bearing (Upper and Lower) (4)
CN-733	Connector	Air Hose (Cine-Focus)
CR-5	Cover	Drive-side (Lower)
CT-86	Catch	Operating-side and Drive-side Door (2)
CU-22	Cup	Sprocket Shaft Oil (2)
HE-114	Hose	Cine-Focus Auxiliary (Front of Frame to Lens Mount)
PG-218	Plug	Frame
PG-261	Plug	Water Connector Frame Hole Cover (2)
PG-608	Plug	Frame Button (Center Wall) (Standard Mechanism)
PN-21	Pin	Gate Tube, Lens Mount Support Bkt. Locate (3)
PN-28	Pin	Film Trap and Shutter Bracket Locate (5)
PN-247	Pin	Carriage Stop (Upper and Lower) (2)
RI-521	Ring	Cine-Focus Hose Connector Retaining
RT-2	Retainer	Main Drive Shaft (Operating-side)
SC-76	Screw	Changeover Shutter Guide - Heat Shield Mount (2)
SC-113	Screw	Drive-side Lower Cover Retaining (2)
SC-127	Screw	Main Drive Shaft Ball Bearing Retaining (3)
SC-137	Screw	Pad Roller Arm Retaining (Upper and Lower) (2)
SC-143	Screw	Main Drive Shaft Retainer Holding
SC-226	Screw	Door Link Stop (2)
SC-565	Screw	Door Catch Fastening (4)
SC-661	Screw	Door Hinge (Mounting to Frame) (12)
SC-739	Screw	Upper Magazine Mounting (4)
SC-817	Screw	Vertical Shaft Lower Driven Gear Safety
SD-1130	Shield	Changeover Shutter Guide - Heat
SP-1949	Strip	Lens Mount Rubber (Cine-Focus)
H1-A-12	OPERATING-SIDE DOOR ASSEMBLY	
CP-20	Clamp	Door Glass Retaining (6)
DO-63	Door	Operating-side
GL-15	Glass	Operating-side Door Viewing
KN-47	Knob	Operating-side Door Opening (includes Fastening Screw)
LI-7	Link	Door Stop (LI-11 for Drive-in)
SB-60	Stop	Door Closing (Felt) (2)
SC-70	Screw	Door Hinge Fastening (6)
SC-123	Screw	Door Glass Clamp and Strike Fastening (8)
SC-226	Screw	Door Stop Link Retaining (for LI-7 and LI-11)
SS-528	Strike	Door (closing)
C2-A-13	DRIVE-SIDE DOOR ASSEMBLY	
DO-57	Door	Drive-side
KN-47	Knob	Door (includes Fastening Screw)
LI-7	Link	Door Stop (LI-11 for Drive-in)
SB-60	Stop	Door Closing (Felt) (2)
SC-70	Screw	Door Hinge Fastening (6)
SC-123	Screw	Door Strike Fastening (2)
SC-226	Screw	Door Stop Link Retaining (For LI-7/LI-11)
SS-528	Strike	Door (Closing)

PART NO.	DESCRIPTION	
C2-A-14	UPPER FIRE TRAP ROLLER HOLDER ASSEMBLY (COMPLETE) (NITRATE FILMS)	
HO-6	Holder	Fire Trap Roller (Upper)
RO-101	Roller	Fire Trap (Large)
RO-102	Roller	Fire Trap (Small) (2)
SC-115	Screw	Roller Retaining (6)
SC-116	Screw	Upper Roller Holder Fastening (Front)
SC-117	Screw	Upper Roller Holder Fastening (Rear) (2)
C1-A-15	DOOR LOCK SPRING BUTTON AND SHANK (OBSOLETE - STOCK AVAILABLE)	
C1-A-20	FRAMING SHAFT ASSEMBLY (COMPLETE)	
C1-A-21	Framing Shaft & Pinion (PI-4/ST-1/PN-29)	
CL-12	Collar	Framing Shaft
CP-1	Clamp	Framing Shaft (Outer)
CP-31	Clamp	Framing Shaft (Inner)
KN-44	Knob	Framing
SC-73	Screw	Framing Shaft Clamp (Upper)
SC-74	Screw	Framing Shaft Collar Fastening
SC-132	Screw	Framing Shaft Clamp (Lower)
SC-140	Screw	Framing Knob Fastening
SG-41	Spring	Framing Shaft Tension
WA-11	Washer	Framing Shaft Clamp Spacer
C2-A-30	INTERMITTENT CARRIAGE & SHUTTER ADJUSTMENT ASSEMBLY (COMPLETE)	
C2-A-33	Intermittent Carriage Assembly	
BU-30	Bushing	Shutter Adjustment Retainer
CG-14	Coupling	Shutter Adjustment
KN-43	Knob	Shutter Adjustment
RT-10	Retainer	Shutter Adjustment Flexible Shaft
SC-77	Screw	Shutter Adjustment Coupling & Retainer Fastening (3)
SC-138	Screw	Shutter Adjustment Knob Fastening
ST-62	Shaft	Shutter Adjustment Flexible
GI-1	Gib	Intermittent Carriage
SA-752	Spacer	Intermittent Drive Bearing Bracket Screw (2)
SC-71	Screw	Intermittent Carriage Gib Fastening (2)
SC-751	Screw	Intermittent Drive Bearing Bkt. Fastening (Allen) (2)
SG-58	Spring	Intermittent Carriage Gib
WA-132	Washer	Intermittent Carriage Gib Lock (2)

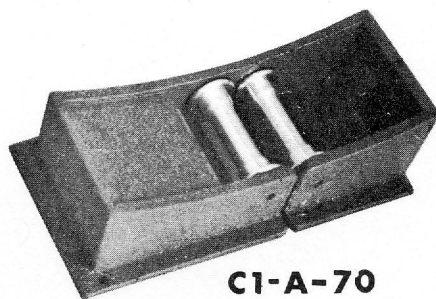


PART NO.	DESCRIPTION	
C2-A-33	INTERMITTENT CARRIAGE ASSEMBLY	
V1-A-32	Shutter Adjustment Screw/Shaft & Collar	
CA-4	Carriage	Intermittent
BR-12	Bracket	Shutter Adjustment
GI-6	Gib	Shutter Adjustment Bracket
NU-7	Nut	Shutter Adjustment Screw/Shaft Stop (2)
PN-22	Pin	Intermittent Carriage Rack
PN-811	Pin	Shutter Adjust. Bracket Gib Retaining (2)
RK-4	Rack	Framing
RT-3	Retainer	Intermittent Carriage Spring (2)
SC-75	Screw	Framing Rack Fastening (2)
SC-78	Screw	Shutter Adjustment Bracket Gib (2)
SC-82	Screw	Intermittent Carriage Spring Retainer Fastening (2)
SC-106	Screw	Intermittent Movement Retaining (4)
SG-100	Spring	Shutter Adjustment Bracket Tension
WA-11	Washer	Shutter Adjustment Screw/Shaft
WA-132	Washer	Shutter Adjusting Bracket Gib Screw Lock (2)
C2-A-50	PILOT LIGHT ASSEMBLY	
C3-A-53	Pilot Light Bulb Protector	
C1-A-54	Pilot Light Switch, Socket & Wire Assembly	
LT-91	Light	Pilot (Framing) (6W-C6 Clear)
CP-21	Clamp	Flexible Shield Retaining (4)
SC-112	Screw	Flexible Shield Retaining Clamp (4)
C1-A-52	PILOT LIGHT SOCKET & GUARD SUPPORT ASSEMBLY	
C1-A-51	Pilot Light Socket & Guard Support	
NI-78	Nipple	Pilot Light Socket
NU-6	Nut	Pilot Light Socket Retainer (2)
SC-172	Screw	Pilot Light Socket Locating
WA-68	Washer	Pilot Light Socket Spacer
C1-A-54	PILOT LIGHT SWITCH, SOCKET & WIRE ASSEMBLY	
C1-A-52	Pilot Light Socket & Guard Support	
CR-17	Cover	Terminal
PG-18	Plug	Male (Plate & Locking Ring)
PG-51	Plug	Female (Cover)
SW-64	Switch	Pilot Light
TU-3	Tube	Pilot Light Flexible Shield (Long)
TU-4	Tube	Pilot Light Flexible Shield (Short)
WI-13	Wire	Pilot Light Connection
H1-A-60	LENS MOUNT ASSEMBLY (COMPLETE)	
BR-601	Bracket	Lens Mount Clamp
BR-663	Bracket	Lens Mount Clamp Support
CL-554	Collar	Focusing Screw
KN-45	Knob	Focus
PG-301	Plug	Focus Screw
RD-150	Rod	Lens Clamp Bracket Guide (Lower)
(Continued ON The Following Page)		

PART NO.	DESCRIPTION	
H1-A-60	LENS MOUNT ASSEMBLY (CONTINUED)	
SA-1226	Spacer	Focusing Screw
SC-72	Screw	Focus Knob Fastening
SC-105	Screw	Focus Screw Spacer Retaining (3)
SC-501	Screw	Lens Clamp Bracket Rod Fastening (2)
SC-678	Screw	Focus Screw Plug Spring Retaining
SC-1229	Screw	Lens Clamp (Knurled)
SC-1231	Screw	Lens Clamp Bracket Adjusting (2)
SC-579	Screw	Lens Clamp Bracket Adjusting Lock (Upper) (2)
SC-1236	Screw	Focus Screw Collar Fastening (2)
SC-1362	Screw	Focusing (Shaft/Screw)
SG-999	Spring	Focusing Screw Plug Retaining
WA-163	Washer	Focus Screw Thrust (2)
WA-203	Washer	Lens Clamp Screw Split
BU-795	Bushing	Lens Mount Eccentric
NU-79	Nut	Lens Mount Eccentric Bushing Lock
SC-88	Screw	Lens Clamp Bracket Locate Stud Fastening (3)
SC-137	Screw	Lens Mount Support Fastening (4)
SU-1357	Stud	Lens Clamp Bkt. Locate (Upper) (Obsolete - Available)
SU-1673	Stud	Lens Clamp Bracket Locate (Upper)
H1-A-66	FILM GATE OPEN & CLOSE LOCK & KNOB ASSEMBLY (COMPLETE)	
C1-A-67	Film Gate Lock Shaft & Pin	
KN-27	Knob	Film Gate Open & Close
LO-45	Lock	Film Gate Open & Close Housing
SC-99	Screw	Film Gate Open & Close Knob Retaining
SG-14	Spring	Film Gate Open & Close Pressure
WA-135	Washer	Film Gate Lock Shaft
A1-A-70	FILM GATE SUPPORT TUBE & BRACKET ASSEMBLY (STANDARD MECHANISM)	
H1-A-66	Film Gate Opening & Closing Knob Assembly	
AD-97	Adapter	Film Gate Retaining
BR-913	Bracket	Gate Support Tube & Knob Housing
EC-1	Eccentric	Film Gate Alignment
SC-98	Screw	Film Gate Retaining Adapter Fastening (4)
SC-131	Screw	Film Gate Knob Assembly Retain. (Upper and Lower) (2)
SC-144	Screw	Film Gate Retaining Thumb
SC-1355	Screw	Film Gate Alignment Eccentric Lock
TU-172	Tube	Film Gate Support
SC-137	Screw	Film Gate Support Tube & Bracket Assembly Mount (4)

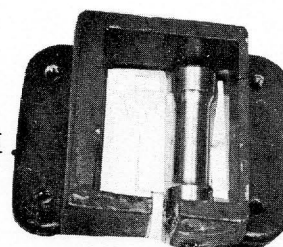


PART NO.	DESCRIPTION	
B1-A-70	FILM GATE SUPPORT TUBE AND BRACKET ASSEMBLY (CINE-FOCUS)	
H1-A-66	Film Gate Opening and Closing Knob Assembly	
B1-A-71	Film Gate Support Bracket and Tube	
AD-97	Adapter	Film Gate Retaining
EC-1	Eccentric	Film Gate Alignment
SC-98	Screw	Film Gate Retaining Adapter Fastening (4)
SC-131	Screw	Film Gate Knob Assembly Retain. (Upper and Lower) (2)
SC-144	Screw	Film Gate Retaining Thumb
SC-1355	Screw	Film Gate Alignment Eccentric Lock
SP-1982	Strip	Film Gate (Rubber)
SP-1991	Strip	Film Gate Mount Bracket (Rubber)
SC-137	Screw	Film Gate Support Tube and Bracket Mount (4)
C1-A-70	UPPER ROLLER HOLDER ASSEMBLY (COMPLETE) (SAFETY FILMS)	
C1-A-71	Upper Roller and Ball Bearings (2)	
C1-A-72	Upper Roller Holder and Bushings	
SU-2059	Stud	Roller Retaining (2)
SC-116	Screw	Upper Roller Holder Fastening (Front)
SC-117	Screw	Upper Roller Holder Fastening (Rear) (2)
C2-A-70	UPPER ROLLER HOLDER ASSEMBLY (SPECIAL 26") (FORWARD TILT)	
C1-A-71	Upper Magazine Roller and Ball Bearings (2)	
C1-A-75	Roller Holder and Bushings	
SC-957	Screw	Roller Holder Assembly Fastening (2)
SU-2059	Stud	Roller (2)
WA-160	Washer	Roller Holder Assembly Fastening Screw (2)
BK-812	Block	Upper Magazine Offset
SC-886	Screw	Upper Magazine Offset Block Fastening (4)
J3-A-90	HEAT FILTER AND HOLDER ASSEMBLY (MODEL B - CINE-FOCUS)	
CP-734	Clamp	Heat Filter Retaining (4)
FI-135	Filter	Heat Control (UVIR-2)
HO-113	Holder	Heat Filter
SC-1016	Screw	Retaining Clamp Fastening (4)

**C1-A-70**

UPPER ROLLER HOLDER ASSEMBLY

FOR USE WITH SAFETY
FILM ONLY. NOT FOR
USE WITH NITRATE OR
OTHER FLAMMABLE FILM

**C1-W-60**

LOWER ROLLER HOLDER ASSEMBLY

PART NO.	DESCRIPTION	
H1-BB-30	INTERMITTENT MOVEMENT ASSEMBLY (COMPLETE)	
H1-BB-16	Intermittent Cover, Outer Bushing & Bracket Assembly	
H1-BB-17	Intermittent Case and Bushings	
C1-BB-26	Intermittent Sprocket Pad and Arm Assembly	
H1-BB-31	Cam Thrust Ball Bearing and Bracket Assembly	
CL-530	Collar	Starwheel Shaft Thrust
CM-528	Cam	Intermittent (Includes PN-615)
GA-181	Gasket	Intermittent Case-Cover Oil Seal
GR-7	Gear	Cam Shaft Driven (Steel)
NU-81	Nut	Intermittent Sprocket Fastening Screw
PE-38	Plate	Stop
PN-615	Pin	Intermittent Cam
SA-1321	Spacer	Cam Thrust Bracket
SC-3	Screw	Flywheel Fastening
SC-39	Screw	Starwheel and Cam Adjustment (2)
SC-69	Screw	Cam Thrust Bracket
SC-81	Screw	Cam Shaft Gear Fastening
SC-104	Screw	Intermittent Cover Fastening (4)
SC-134	Screw	Stop Plate Retaining
SC-155	Screw	Inter. Sprocket Pad Arm Assembly Retaining (Allen)
SC-1010	Screw	Intermittent Cover Oil Drain
SC-1235	Screw	Starwheel Shaft Thrust Collar Fastening (2)
SC-1322	Screw	Intermittent Sprocket Fastening
SK-1263	Sprocket	Intermittent (includes NU-81 - SC-1322)
SX-1323	Starwheel	Intermittent
WA-12	Washer	Cover Oil Drain Screw (Copper)
WA-65	Washer	Cover and Oil Drain Retaining Screw (Steel) (5)
WA-126	Washer	Cover Oil Drain Screw (Fibre)
WH-124	Flywheel	Intermittent
H1-BB-16	INTERMITTENT COVER, STARWHEEL BUSHING AND BRACKET ASSEMBLY	
H1-BB-34	Starwheel Bushing and Bracket (Outer)	
BU-645	Bushing	Starwheel Shaft (Inner)
CR-297	Cover	Intermittent (H1-BB-16)
CU-658	Cup	Intermittent Case-Cover Oil
SC-94	Screw	Intermittent Film Stripper Fastening
SC-105	Screw	Starwheel Shaft Inner Bushing Fastening (3)
SC-217	Screw	Cam Shaft Adjusting Plug
SC-1190	Screw	Starwheel Outer Bushing Bracket Fastening (Allen) (2)
SP-1326	Stripper	Intermittent Film
WA-28	Washer	Cam Shaft Adjusting Plug
WN-192	Window	Oil Level

LUBRICATE WITH CENTURY CERTIFIED PROJECTOR OIL
PROVEN BEST BY ACTUAL TEST - IN GALLON TINS.

PART NO.	DESCRIPTION	
H1-BB-17	INTERMITTENT CASE AND BUSHING ASSEMBLY	
BU-21	Bushing	Cam Shaft (Inner)
BU-40	Bushing	Cam Shaft (Outer) (Oilite)
CS-529	Case	Intermittent (H1-BB-17)
PG-159	Plug	Case Oil Hole (Felt)
PN-32	Pin	Adjusting Pivot
SC-7	Screw	Cam Shaft Inner Bushing Fastening (3)
C1-BB-26	INTERMITTENT SPROCKET PAD AND ARM ASSEMBLY (COMPLETE)	
C1-BB-27	Intermittent Pad Spring Stud and Plate	
C1-BB-28	Intermittent Sprocket Pad Assembly	
C1-BB-29	Intermittent Sprocket Pad Stud and Bushing	
AR-46	Arm	Intermittent Sprocket Pad
BL-18	Ball	Intermittent Sprocket Pad Arm (2)
KN-30	Knob	Intermittent Sprocket Pad Arm
NU-46	Nut	Intermittent Pad Adjusting Spring
SC-82	Screw	Spring Stud Plate Fastening
SC-127	Screw	Knob Fastening
SC-708	Screw	Intermittent Pad Adjusting Spring Nut Stop
SG-21	Spring	Intermittent Sprocket Pad Arm Ball (2)
SG-705	Spring	Intermittent Pad Adjusting
C1-BB-28	INTERMITTENT SPROCKET PAD ASSEMBLY	
PA-194	Pad	Intermittent Sprocket (Inner)
PA-195	Pad	Intermittent Sprocket (Outer) (2)
SA-33	Spacer	Intermittent Sprocket Pad (4)
SC-877	Screw	Intermittent Sprocket Pad Fastening (4)
WA-151	Washer	Intermittent Sprocket Pad Fastening Screw Lock (4)
C1-BB-29	INTERMITTENT SPROCKET PAD STUD AND BUSHING ASSEMBLY	
BU-27	Bushing	Intermittent Sprocket Pad Stud (C1-BB-29)
KN-24	Knob	Intermittent Sprocket Pad Stud (C1-BB-29)
PN-25	Pin	Intermittent Sprocket Pad Stud Bushing
PN-36	Pin	Intermittent Sprocket Pad Stud Knob Stop
PN-68	Pin	Intermittent Sprocket Pad Stud Knob Fastening
SU-4	Stud	Intermittent Sprocket Pad (C1-BB-29)
H1-BB-31	INTERMITTENT CAM THRUST BALL BEARING AND BRACKET ASSEMBLY	
C1-BB-11	Intermittent Cam Thrust Ball Bearing	
BR-643	Bracket	Intermittent Cam Thrust
SC-85	Screw	Intermittent Cam Thrust Bearing
H1-BB-34	STARWHEEL SHAFT OUTER BRACKET AND BUSHING ASSEMBLY	
BR-644	Bracket	Starwheel Shaft (Outer)
BU-646	Bushing	Starwheel Shaft (Outer)
PN-665	Pin	Starwheel Shaft Bracket Locate (2)

PART NO.	DESCRIPTION	
C1-C-10	UPPER PAD ROLLER ARM ASSEMBLY (COMPLETE)	
C1-C-13	Upper Pad Roller Arm Stud, Knob and Bushing	
C1-C-21	Pad Roller Shaft and Knob	
AR-1	Arm	Upper Pad Roller
BL-18	Ball	Pad Roller Arm (2)
NU-8	Nut	Pad Roller Adjusting Screw Stop
RO-100	Roller	Pad
SC-87	Screw	Pad Roller Adjusting
SC-88	Screw	Pad Roller Shaft and Knob Retaining
SG-21	Spring	Pad Roller Arm Ball (2)
C1-C-13	UPPER PAD ROLLER ARM STUD, KNOB AND BUSHING	
C1-C-11	Upper Pad Roller Arm Stud and Knob (C1-C-13)	
BU-27	Bushing	Pad Roller Arm Stud (C1-C-13)
PN-25	Pin	Pad Roller Arm Stud Bushing Fastening
C1-C-40	LOWER PAD ROLLER ARM ASSEMBLY (COMPLETE)	
C1-C-21	Pad Roller Shaft and Knob	
C1-C-41	Lower Pad Roller Arm Stud, Knob and Bushing	
AR-21	Arm	Lower Pad Roller
BL-18	Ball	Pad Roller Arm (2)
NU-8	Nut	Pad Roller Adjusting Screw Stop
RO-100	Roller	Pad
SC-87	Screw	Pad Roller Adjusting
SC-88	Screw	Pad Roller Shaft and Knob Retaining
SG-21	Spring	Pad Roller Arm Ball (2)
SC-137	Screw	Pad Roller Assembly Retaining (Upper & Lower) (2)
C1-C-41	LOWER PAD ROLLER ARM STUD, KNOB AND BUSHING	
C1-C-42	Lower Pad Roller Arm Stud and Knob (C1-C-41)	
BU-27	Bushing	Pad Roller Arm Stud (C1-C-41)
PN-25	Pin	Pad Roller Arm Stud Bushing Fastening
C2-D-10	UPPER SPROCKET SHAFT ASSEMBLY (COMPLETE)	
GR-10	Gear	Sprocket Shaft Driven
SC-89	Screw	Sprocket and Gear Fastening (2)
SK-964	Sprocket	Upper
ST-2	Shaft	Sprocket
C2-D-20	LOWER SPROCKET SHAFT ASSEMBLY (COMPLETE)	
GR-10	Gear	Sprocket Shaft Driven
SC-89	Screw	Sprocket and Gear Fastening (2)
SK-965	Sprocket	Lower
ST-2	Shaft	Sprocket
H1-D-40	SINGLE SHUTTER SHAFT, BEARINGS, BKTS., & BLADE ASSEMBLY (COMPLETE)	
C2-D-41	Single Shutter Blade & Hub (Indoor Theatre)	
H1-D-44	Single Shutter Shaft, Ball Bearings, Bracket and Gears	
KN-12	Knob	Shutter Shaft Indicator
SC-74	Screw	Indicator Knob Fastening
SG-16	Spring	Shutter Hub Spacing

PART NO.	DESCRIPTION	
H2-D-40	SINGLE SHUTTER SHAFT, BEARINGS, BKTS. & BLADE ASSEMBLY (COMPLETE) SAME AS H1-D-40 - <u>EXCEPTION</u> : C3-D-41 Replaces C2-D-41 (FOR DRIVE-IN THEATRE)	
SC-137	Screw	Single Shutter Shaft & Bkt. Assembly Mount, (6)
C1-D-41	SINGLE SHUTTER BLADE AND HUB ASSEMBLY (SPECIAL)	
C1-D-48	Single Shutter and Fan Blades (Special) (90 degrees)	
C2-D-49	Single Shutter Hub With Clamp Screws	
SC-128	Screw	Single Shutter and Hub Fastening (5)
C2-D-41	SINGLE SHUTTER BLADE AND HUB ASSEMBLY (INDOOR THEATRE)	
C2-D-48	Single Shutter & Fan Blades (83° - Standard) (Indoor Theatre)	
C2-D-49	Single Shutter Hub With Clamp Screws	
SC-128	Screw	Single Shutter and Hub Fastening (5)
C3-D-41	SINGLE SHUTTER BLADE AND HUB ASSEMBLY (DRIVE-IN THEATRE)	
C3-D-48	Single Shutter and Fan Blades (Drive-In)	
C2-D-49	Single Shutter Hub With Clamp Screws	
SC-128	Screw	Single Shutter and Hub Fastening (5)
C2-D-42	SHUTTER SHAFT BALL BEARING AND BRACKET ASSEMBLY (FRONT)	
BG-9	Bearing	Ball
BR-186	Bracket	Ball Bearing (Front) (4" Diam. Lens Mount Mechanism)
SC-127	Screw	Ball Bearing Retaining (3)
B1-D-43	FIXED SHUTTER GUARD ASSEMBLY (MODEL "B" - CINE-FOCUS)	
GD-279	Guard	Fixed Shutter (For Heat-filter and Holder)
GL-18	Glass	Spot Sight
HO-5	Holder	Spot Sight Glass
PN-26	Pin	Spot Sight Spring
PN-966	Pin	Shutter Blade Setting
SC-92	Screw	Spot Sight Glass Holder Fastening (4)
SC-94	Screw	Heat Filter Retaining Spring Fastening (4)
SG-44	Spring	Spot Sight Glass Retaining
SG-1995	Spring	Heat Filter Retaining (2)
H1-D-43	FIXED SHUTTER GUARD ASSEMBLY (REGULAR)	
GD-179	Guard	Fixed Shutter (Regular) (H1-D-43)
GL-18	Glass	Spot Sight
HO-5	Holder	Spot Sight Glass
PN-26	Pin	Spot Sight Spring
PN-647	Pin	Shutter Blade Setting
SC-92	Screw	Spot Sight Glass Holder Fastening (4)
SG-44	Spring	Spot Sight Glass Retaining

USE CENTURY GEAR-LUBRICANT-A LITTLE IS AS GOOD AS A LOT..

PART NO.	DESCRIPTION	
H1-D-44	SINGLE SHUTTER SHAFT, BALL BEARINGS, GEARS AND BRACKET ASSEMBLY	
C2-D-42	Shutter Shaft Ball Bearing and Bracket (Front)	
C1-D-45	Single Shutter Shaft Ball Bearing and Bracket (Rear)	
CL-128	Collar	Ball Bearing Thrust (Rear)
GR-7	Gear	Shutter Shaft Driven (Steel)
RT-61	Retainer	Ball Bearing Thrust Washer (2)
RT-62	Retainer	Ball Bearing Pressure Spring (Front)
SC-23	Screw	Thrust Collar Fastening
SC-81	Screw	Shutter Shaft Driven Gear Fastening
SG-68	Spring	Ball Bearing Pressure (Front)
ST-1397	Shaft	Shutter
WA-130	Washer	Ball Bearing Thrust (Neoprene) (2)
WA-131	Washer	Ball Bearing Thrust (Steel) (2)
C1-D-45	SINGLE SHUTTER BALL BEARING AND BRACKET ASSEMBLY (REAR)	
BG-9	Bearing	Ball
BR-14	Bracket	Ball Bearing (Single Shutter) (Rear)
SC-127	Screw	Ball Bearing Retaining (4)
B1-D-46	SHUTTER GUARD ASSEMBLY (COMPLETE) (MODEL "B" - CINE-FOCUS)	
B1-D-43	Fixed Shutter Guard (Model "B" - Cine-Focus)	
GD-245	Guard	Removable Shutter (Rear)
HD-76	Hood	Light
SC-679	Screw	Removable Shutter Guard Fastening (Drive-side) (2)
SC-1265	Screw	Light Hood Fastening (3)
SC-1521	Screw	Removable Shutter Guard Fastening (2)
H1-D-46	SHUTTER GUARD ASSEMBLY (COMPLETE) (REGULAR)	
H1-D-43	Fixed Shutter Guard (Regular)	
GD-245	Guard	Removable Shutter (Rear)
HD-76	Hood	Light
SC-679	Screw	Removable Shutter Guard Fastening (Drive-Side) (2)
SC-1265	Screw	Light Hood Fastening (3)
SC-1521	Screw	Removable Shutter Guard Fastening (Rear) (2)
SC-1109	Screw	Fixed Shutter Guard Mounting (4)
C1-D-48	SINGLE SHUTTER AND FAN BLADE ASSEMBLY (SPECIAL (90°))	
BD-26	Blade	Shutter Fan (2)
BD-31	Blade	Single Shutter (Special) (90°)
SC-94	Screw	Shutter & Fan Blade Fastening (6)
C2-D-48	SINGLE SHUTTER AND FAN BLADE ASSEMBLY (INDOOR)	
BD-26	Blade	Shutter Fan (2)
BD-228	Blade	Single Shutter (83°) (Standard) (Indoor)
SC-94	Screw	Shutter and Fan Blade Fastening (6)
C3-D-48	SINGLE SHUTTER AND FAN BLADE ASSEMBLY (DRIVE-IN)	
BD-26	Blade	Shutter Fan (2)
BD-229	Blade	Single Shutter (Drive-In)
SC-94	Screw	Shutter and Fan Blade Fastening (6)

PART NO.	DESCRIPTION	
C2-D-49	SINGLE AND DOUBLE SHUTTER (OUTER) HUB ASSEMBLY	
HB-44	Hub	Shutter (C2-D-49)
SC-574	Screw	Shutter Hub Clamp (2)
H3-D-50	DOUBLE SHUTTER SHAFT, BEARINGS-BKTS & BLADE ASSEMBLY (COMPLETE)	
C4-D-51	Shutter Blade and Hub (Inner) (DDS) (Indoor)	
C4-D-52	Shutter Blade and Hub (Outer) (DDS) (Indoor)	
H1-D-54	Double Shutter Shaft Ball Bearings, Brackets and Gears	
KN-12	Knob	Shutter Shaft Indicator
SA-2044	Spacer	Shutter Hub
SC-74	Screw	Indicator Knob Fastening
SG-16	Spring	Shutter Hub Spacing
H4-D-50	DOUBLE SHUTTER SHAFT, BEARINGS, BRACKETS, GEARS-BLADE ASSEMBLY SAME AS H3-D-50 - <u>EXCEPTION</u> : C5-D-51 & C5-D-52 REPLACES C4-D-51 & C4-D-52 (FOR DRIVE-IN THEATRE)	
SC-137	Screw	Double Shutter Shaft Assembly Mounting (Front) (2)
SC-1116	Screw	Double Shutter Shaft Assembly Mount. (Allen) (Rear) (4)
C4-D-51	DOUBLE SHUTTER BLADE AND HUB ASSEMBLY (INNER) (INDOOR)	
C2-D-56	Double Shutter Hub and Clamp Screws (Inner)	
C2-D-59	Double Shutter and Fan Blades (Inner) (DDS) (Indoor)	
SC-128	Screw	Shutter and Hub Fastening (5)
C5-D-51	DOUBLE SHUTTER BLADE AND HUB ASSEMBLY (INNER) (DRIVE-IN)	
C2-D-56	Double Shutter Hub and Clamp Screw (Inner)	
C4-D-58	Double Shutter & Fan Blades (Inner) (DDS) (Drive-In)	
SC-128	Screw	Shutter and Hub Fastening (5)
C4-D-52	DOUBLE SHUTTER BLADE AND HUB ASSEMBLY (OUTER) (INDOOR)	
C2-D-49	Double Shutter Hub and Clamp Screws	
C2-D-58	Double Shutter and Fan Blades (Indoor) (DDS) (Outer)	
SC-128	Screw	Shutter and Hub Fastening (5)
C5-D-52	DOUBLE SHUTTER BLADE AND HUB ASSEMBLY (OUTER) (DRIVE-IN)	
C2-D-49	Shutter Hub and Clamp Screws (Outer)	
C4-D-59	Double Shutter and Fan Blades (Outer) (DDS) (Drive-in)	
SC-128	Screw	Shutter And Hub Fastening (5)
C1-D-53	DOUBLE SHUTTER BALL BEAR.& BRACKET ASSEMBLY (REAR-OUTER) (STYLE 1)	
BG-11	Bearing	Ball (Matched Pair (Rear-Outer)
BR-15	Bracket	Double Shutter Shaft Ball Bearing (Rear-Outer)
SC-127	Screw	Ball Bearing Retaining (4)
C2-D-53	DOUBLE SHUTTER BALL BEAR.& BRACKET ASSEMBLY (REAR-OUTER) (STYLE 2)	
BG-6	Bearing	Ball (2)
BR-15	Bracket	Ball Bearing
SA-2043	Spacer	Ball Bearing Distance
SC-127	Screw	Ball Bearing Retaining (4)

PART NO.	DESCRIPTION	
H1-D-54	DOUBLE SHUTTER SHAFT, BALL BEARINGS, GEARS & BRACKETS ASSEMBLY	
C2-D-42	Shutter Shaft Ball Bearing & Bracket (Front)	
C2-D-55	Double Shutter Intermediate Shaft, Gears, Ball Bearings & Bracket	
CL-128	Collar	Shutter Shaft Ball Bearing Thrust (Rear)
GR-7	Gear	Shutter Shaft Driven (Steel)
RT-61	Retainer	Ball Bearing Thrust Washer (2)
RT-62	Retainer	Ball Bearing Front Pressure Spring
SC-23	Screw	Ball Bearing Thrust Collar Fastening
SC-81	Screw	Shutter Shaft Driven Gear Fastening
SG-68	Spring	Ball Bearing Front Pressure
ST-1397	Shaft	Shutter (Direct)
WA-130	Washer	Ball Bearing Thrust (Neoprene) (2)
WA-131	Washer	Ball Bearing Thrust (Steel) (2)
C2-D-55	INTERMEDIATE SHUTTER SHAFT BALL BEARINGS, GEAR & BRACKETS	
C2-D-53	Direct Shutter	Ball Bearing & Bracket (Outer-Rear) (Style 2)
BG-9	Bearing	Direct Shutter Shaft - Intermediate Bracket Ball
BG-10	Bearing	Intermediate Shutter Shaft Ball (2)
BR-16	Bracket	Intermediate Shutter Shaft
CL-35	Collar	Intermediate Shutter Shaft Ball Bearing Thrust
CL-747	Collar	Inner Shutter Spacer
GR-7	Gear	Intermediate Shutter Shaft Driven (Steel)
GR-13	Gear	Double Shutter Reverse Driven (Steel)
GR-72	Gear	Double Shutter Reverse Drive (Formica)
SC-81	Screw	Intermediate Shutter Shaft Steel Gear Fastening
SC-89	Screw	Intermediate Shutter Shaft Collar & Formica Gear (2)
SC-112	Screw	Direct/Intermed. Shutter Shaft Ball Bearing Retainer (3)
SC-131	Screw	Ball Bearing Retaining (3)
SC-2048	Screw	Inner Shutter Spacer Collar (2)
SG-86	Spring	Intermediate Shaft Ball Bearing Thrust
ST-765	Shaft	Intermediate Shutter
WA-5	Washer	Intermediate Shutter Shaft Thrust (Fibre)
WA-9	Washer	Reverse Shutter Steel Gear Thrust (Steel)
WA-17	Washer	Intermediate Shutter Shaft Thrust (Steel) (2)
WA-254	Washer	Intermediate Shutter Shaft Thrust (Steel)
SC-137	Screw	Intermediate Bracket Mounting (4)
TU-235	Tube	Century Gear-Lubricant (4 oz. tube)
C2-D-56	REVERSE DOUBLE SHUTTER HUB ASSEMBLY (INNER)	
HB-45	Hub	Reverse Shutter (Inner) (C2-D-56)
SC-574	Screw	Reverse Shutter Hub Clamp (2)
C2-D-58	DOUBLE SHUTTER AND FAN BLADES (OUTER) (DDS) (INDOOR)	
BD-26	Blade	Shutter Fan (2)
BD-1084	Blade	Shutter (OUTER) (DDS) (INDOOR)
SC-94	Screw	Shutter and Fan Blade Fastening (6)
C4-D-58	DOUBLE SHUTTER AND FAN BLADES (INNER) (DDS) (DRIVE-IN)	
BD-1087	Blade	Shutter (INNER) (DDS) DRIVE-IN)
BD-1101	Blade	Shutter Fan (2)
SC-94	Screw	Shutter/Fan Blade Fastening (4)

PART NO.	DESCRIPTION	
C2-D-59	DOUBLE SHUTTER AND FAN BLADES (INNER) (DDS) (INDOOR)	
BD-26	Blade	Shutter Fan (2)
BD-1085	Blade	Shutter (Inner) (DDS)
SC-94	Screw	Shutter/Fan Blade Fastening (6)
C4-D-59	DOUBLE SHUTTER AND FAN BLADE (OUTER) (DDS) (DRIVE-IN)	
BD-1086	Blade	Double Shutter (Outer) (DDS) (Drive-in)
BD-1101	Blade	Shutter Fan (2)
SC-94	Screw	Shutter/Fan Blade Fastening (4)
C1-D-60	AUTOMATIC FIRE SHUTTER ASSEMBLY	
C1-D-64	Fire Shutter Arm & Shaft	
BG-17	Bearing	Fire Shutter Dowser Pivot (Casting)
CK-11	Crank	Fire Shutter
SC-72	Screw	Fire Shutter Weight Fastening
SC-95	Screw	Fire Shutter Crank Fastening (2)
SC-97	Screw	Fire Shutter Lifting Stud
SU-26	Stud	Fire Shutter Lifting (Fibre)
WA-241	Washer	Fire Shutter
WT-8	Weight	Fire Shutter
SC-137	Screw	Fire Shutter Assembly Mounting (2)
A1-D-70	LIGHT SHIELD ASSEMBLY (COMPLETE) (STAND. & WATER COOL MECHANISMS)	
SC-51	Screw	Light Shield Mounting (2)
SD-1799	Shield	Light (A1-D-70)
A1-E-10	FILM TRAP ASSEMBLY (COMPLETE)	
A1-E-12	Lateral Guide Rollers, Spring & Retainer	
A1-E-13	Spring Shoe Retaining Block and Pin (2)	
BL-701	Ball	Retaining
CM-685	Cam	Film Trap Spring Shoe Adjusting Eccentric
GU-16	Guide	Film Trap (Inner & Outer) (2)
KN-70	Knob	Spring Shoe Tension Adjustment
PE-518	Plate	Aperture (600 x 825)
PN-519	Pin	Aperture Plate Stop
PN-824	Pin	Shoe Tension Adjusting Knob Stop
PT-33	Pivot	Lateral Guide Roller Assembly (2)
RD-281	Rod	Spring Shoe Retaining Block Support
RD-282	Rod	Eccentric Cam
RI-296	Ring	Cam & Support Rod Retaining (3)
SC-128	Screw	Film Trap Guide Fastening (4)
SC-134	Screw	Lateral Guide Roller Assembly Pivot Retaining (2)
SC-578	Screw	Adjusting Knob Fastening
SC-674	Screw	Spring Shoe & Aperture Retaining Spring Fastening (8)
SC-706	Screw	Retaining Ball
SC-1800	Screw	Film Trap Retaining Thumb
SC-1843	Screw	Eccentric Cam Fastening
SG-1484	Spring	Aperture Plate Retaining (2)
SG-1802	Spring	Film Trap Eccentric Tension Control (Flat)
SG-1817	Spring	Retaining Ball
SH-1811	Shoe	Film Trap Spring (2) —
TP-170	Trap	Film
WA-245	Washer	Film Trap Spring Shoe Fastening Screw Lock (Top) (2)


PART NO.	DESCRIPTION	
A1-E-12	LATERAL GUIDE ROLLER ASSEMBLY (COMPLETE)	
RI-79	Ring	Lateral Guide Roller Pressure Spring Retaining
RO-283	Roller	Lateral Guide (Inner)
RO-284	Roller	Lateral Guide (Outer)
SG-124	Spring	Lateral Guide Roller Pressure
A1-E-40	FILM GATE ASSEMBLY (COMPLETE) (MODEL A)	
A1-E-41	Film Gate Plate & Studs	
PA-853	Pad	Film Gate
SC-114	Screw	Film Gate Pad Fastening (2)
B1-E-40	FILM GATE ASSEMBLY (COMPLETE) (MODEL B CINE-FOCUS)	
A1-E-41	Film Gate Plate and Studs	
PA-853	Pad	Film Gate
SA-1980	Spacer	Film Gate (Upper)
SA-1981	Spacer	Film Gate (Lower)
SC-1956	Screw	Pad and Spacer Fastening (2)
A1-E-70	FILM TRAP SUPPORT & HEAT SHIELD ASSEMBLY (STANDARD)	
G1-255	Gib	Film Trap Support
SA-1942	Spacer	Heat Shield Mounting (4)
SC-1842	Screw	Heat Shield Fastening (4)
SC-2047	Screw	Film Trap Support Gib Fastening (3)
SD-1808	Shield	Heat (Asbestos)
SO-1804	Support	Film Trap
WA-88	Washer	Film Trap Support Gib Fastening Screw (3)
A2-E-70	FILM TRAP SUPPORT/WATER CELL ASSEMBLY (COMPLETE)	
A1-E-71	Film Trap Support/Water Cell With Tubes & Connector Block	
GI-255	Gib	Film Trap Support/Water Cell
SC-2047	Screw	Film Trap Support/Water Cell Gib Fastening (3)
WA-88	Washer	Film Trap Support/Water Cell Gib Fastening Screw (3)
SC-81	Screw	Water Cell Tube Connecting Block Fastening
SC-137	Screw	Film Trap Support/Water Cell Mounting (3)
<u>APERTURE PLATES (STANDARD & WATER COOLED) (MODELS SA/DA-SB/DB)</u>		
PE-518	1.375:1 Standard	600 x .825
PE-518-E1	-----	Blank
PE-518-E2	-----	Pin Hole
PE-518-E3	2:1 (Wide Screen)	.412 x .825
PE-518-E4	1.85:1 Standard	.445 x .825
PE-518-E5	1.75:1 Standard	.470 x .825
PE-518-E6	1.66:1 Standard	.495 x .825
PE-518-E7	1.375:1 Undersize	.581 x .703
PE-518-E8	1.85:1-1.75:1 Undersize	.420 x .800
PE-518-E9	1.66:1 Undersize	.470 x .800
PE-518-E12	Anamorphic C.S. 2.35:1	.715 x .825
PE-518-E13	Anamorphic C.S. 2.35:1 Undersize	.675 x .800
PE-518-E14	Anamorphic 2:1	.715 x .715
PE-518-E15	Anamorphic 2:1 Undersize	.650 x .650
PE-518-E16	Anamorphic 2.35:1 Undersize	.650 x .775

PART NO.	DESCRIPTION	
C1-G-22	GOVERNOR WEIGHT ASSEMBLY	
HO-3	Holder	Governor Link (Lower)
HO-4	Holder	Governor Link (Upper)
LI-3	Link	Governor Weight (4)
SC-95	Screw	Upper Governor Link Holder Fastening
SC-135	Screw	Governor Weight Holder Link (Short) (4)
SC-136	Screw	Governor Weight Link (Long) (4)
SV-42	Sleeve	Governor Weight Stop
WT-6	Weight	Governor (Balanced Pair)
C2-G-23	VERTICAL SHAFT INTERMITTENT DRIVE BALL BEARING AND BRACKET	
BG-6	Bearing	Intermittent Drive Ball
BR-872	Bracket	Intermittent Drive Ball Bearing
PE-825	Plate	Intermittent Drive Ball Bearing Retaining (Steel)
RI-276	Ring	Ball Bearing Retaining (Neoprene)
SC-1763	Screw	Ball Bearing Retaining Plate Fastening (3)
WA-239	Washer	Ball Bearing Retaining (Neoprene) (2)
C1-G-31	VERTICAL SHAFT BALL BEARING AND BRACKET (UPPER & LOWER)	
BG-9	Bearing	Vertical Shaft Ball
BR-20	Bracket	Vertical Shaft Ball Bearing (Upper & Lower)
SC-127	Screw	Vertical Shaft Ball Bearing Retaining (3)
C3-G-90	VERTICAL SHAFT AND GOVERNOR ASSEMBLY (COMPLETE) (DOUBLE SHUTTER)	
C3-G-100	Vertical Shaft and Governor Assembly	
GR-207	Gear	Intermediate Shutter Drive (Formica)
SC-574	Screw	Shutter Drive Gear Fastening
M3-G-90	VERTICAL SHAFT AND GOVERNOR ASSEMBLY (MODEL DA) (DIRECT DRIVE)	
M3-G-100	Vertical Shaft and Governor Assembly (Direct Drive)	
GR-207	Gear	Intermediate Shutter Drive (Formica)
SC-574	Screw	Intermediate Shutter Drive Gear Fastening
C2-G-92	INTERMITTENT DRIVE GEAR, BALL BEARING, BRACKET AND NUT	
C2-G-23	Vertical Shaft-Intermittent Drive Ball Bearing and Bracket	
C1-G-24	Intermittent Drive Gear Nut (Includes PG-13 & SC-63)	
GR-234	Gear	Intermittent Drive (Formica)
WA-9	Washer	Ball Bearing
C3-G-100	VERTICAL SHAFT AND GOVERNOR ASSEMBLY (COMPLETE) (SINGLE SHUTTER)	
C1-G-22	Governor Weight Assembly	
C1-G-31	Ball Bearing and Bracket (Upper and Lower) (2)	
C1-G-44	Upper Thrust Collar (Includes PG-13 & SC-63)	
C2-G-91	Vertical Shaft and Key (KY-53)	
C2-G-92	Intermittent Drive Gear, Ball Bearing, Bracket and Nut	
CL-28	Collar	Lower Ball Bearing Oil Protector
GR-4	Gear	Vertical Shaft Lower Driven (Steel) (Standard)
GR-5	Gear	Vertical Shaft Sprocket Drive (Steel) (2)
GR-207	Gear	Shutter Drive (Formica)
RT-61	Retainer	Ball Bearing Thrust Washer (Upper)
SC-81	Screw	Vertical Shaft Steel Gears Fastening (3)

→ C3-G-100 Assembly - Continued on Next Page

PART NO.	DESCRIPTION	
C3-G-100	VERTICAL SHAFT AND GOVERNOR ASSEMBLY (SINGLE SHUTTER) (CONTINUED)	
SC-574	Screw	Shutter Drive Gear Fastening
WA-3	Washer	Vertical Shaft Thrust (Fibre) (2)
WA-10	Washer	Vertical Shaft Thrust (Steel)
WA-14	Washer	Vertical Shaft Thrust Spring (2)
WA-130	Washer	Ball Bearing Thrust (Neoprene) (Upper)
WA-131	Washer	Ball Bearing Thrust (Steel) (Upper)
M3-G-100	VERTICAL SHAFT & GOVERNOR ASSEMBLY (SINGLE SHUTTER) (DIRECT-DRIVE)	
C1-G-22	Governor Weight Assembly	
C1-G-31	Vertical Shaft Ball Bearing & Bracket (Upper & Lower) (2)	
C1-G-44	Vertical Shaft Upper Thrust Collar (Includes PG-13 & SC-63)	
C2-G-91	Vertical Shaft & Key (KY-53)	
C2-G-92	Intermittent Drive Gear, Ball Bearing, Bracket & Nut	
CL-28	Collar	Lower Ball Bearing Oil Protector
GR-5	Gear	Vertical Shaft Sprocket Drive (Steel) (2)
GR-182	Gear	Vertical Shaft Lower Driven (Steel) (Direct Drive)
GR-207	Gear	Vertical Shaft Shutter Drive (Formica)
RT-61	Retainer	Ball Bearing Thrust Washer (Upper)
SC-81	Screw	Vertical Shaft Steel Gears Fastening (3)
SC-574	Screw	Vertical Shaft Shutter Drive Gear Fastening
WA-3	Washer	Vertical Shaft Thrust (Fibre) (2)
WA-10	Washer	Vertical Shaft Thrust (Steel)
WA-14	Washer	Vertical Shaft Thrust (Spring) (2)
WA-130	Washer	Ball Bearing Thrust (Neoprene) (Upper)
WA-131	Washer	Ball Bearing Thrust (Steel) (Upper)
GR-288	Gear	Vertical Shaft Lower Driven (Formica) (Direct Drive) (Special)
SC-3	Screw	Lower Driven Gear (GR-288) Fastening
SC-143	Screw	Vertical Shaft Assembly Mount (4)
C1-G-110	MAIN DRIVE ASSEMBLY (COMPLETE) (STANDARD DRIVE)	
BG-6	Bearing	Main Drive Shaft Ball (2)
GR-8	Gear	Main Drive (Formica)
SC-743	Screw	Main Drive Gear Fastening (2)
ST-744	Shaft	Main Drive
WA-127	Washer	Main Drive Gear Thrust (2)
M3-G-110	MAIN DRIVE SHAFT ASSEMBLY (COMPLETE) (DIRECT DRIVE)	
BG-6	Bearing	Main Drive Shaft Ball (2)
GR-183	Gear	Main Drive (Formica) (Direct Drive)
SC-743	Screw	Main Drive Gear Fastening (2)
ST-744	Shaft	Main Drive
WA-127	Washer	Main Drive Gear Thrust (2)
GR-271	Gear	Main Drive (Steel) (Direct Drive) (Special)
H1-T-10	KIT FOR REVERSING FILM OPERATION IN A CENTURY PROJECTOR	
C2-E10	Film Trap Assembly (Straight Type)	
H1-T-11	Intermittent Sprocket Pad Assembly (Reversing Long Pad)	
H1-T-20	Film Gate Assembly (Straight Type) (Reversing Long Pad)	
H1-D-70	Asbestos Cooling Plates and Light Shield Assembly	

PART NO.	DESCRIPTION	
H1-T-11	INTERMITTENT SPROCKET PAD ASSEMBLY (REVERSING PADS)	
PA-912	Pad	Intermittent Sprocket (Reversing Type) (Inner)
PA-913	Pad	Intermittent Sprocket (Reversing Type) (Outer) (2)
SA-33	Spacer	Intermittent Sprocket Pad (4)
SC-877	Screw	Intermittent Sprocket Pad Fastening (4)
WA-151	Washer	Intermittent Sprocket Pad Fastening Screw Lock Washer (4)
C2-T-12	SOUND GUIDE ROLLER ASSEMBLY (SPECIAL)	
RO-100	Roller	Pad
RT-8	Retainer	Ball Bearing
SC-127	Screw	Pad Roller Retaining
SU-53	Stud	Pad Roller
H1-T-20	FILM GATE ASSEMBLY (STRAIGHT) (COMPLETE) (PAD FOR REVERSING)	
C1-E-41	Film Gate Plate and Studs	
NU-83	Nut	Adjusting Spring (2)
PA-911	Pad	Film Gate (Special) (For Reversing)
PE-180	Plate	Film Gate Pad Retaining Spring (2)
SC-709	Screw	Film Gate Pad Retaining Spring Fastening (4)
SC-1551	Screw	Film Gate Pad Retaining Spring Plate Fastening (4)
SG-685	Spring	Film Gate Pad Retaining (2)
SG-1352	Spring	Film Gate Pad Adjusting (2)
SU-1353	Stud	Film Gate Pad Adjusting Spring Retaining (2)
C1-T-21	LOWER PAD ROLLER ARM ASSEMBLY (WE209/211 REPRODUCER)	
C1-C-13	Pad Roller Arm Stud, Knob and Bushing	
C1-C-21	Pad Roller Shaft and Knob	
AR-6	Arm	Lower Pad Roller (Special)
BL-18	Ball	Pad Roller Arm (2)
NU-8	Nut	Pad Roller Adjusting Screw Stop
RO-100	Roller	Pad
SC-87	Screw	Pad Roller Adjusting
SC-88	Screw	Pad Roller Shaft and Knob Fastening
SG-21	Spring	Pad Roller Arm (2)
C1-T-22	LOWER SPROCKET STRIPPER (WE 209/211 SOUND REPRODUCER)	
SC-129	Screw	Stripper Retaining
SP-93	Stripper	Lower Sprocket (C1-T-22)
C1-T-31	DRIVE-SIDE DOOR ASSEMBLY (SPECIAL)	
C1-A-15	Door Lock Spring Shank and Button	
DO-5	Door	Drive-Side
KN-47	Knob	Door (With Fastening Screw)
LI-7	Link	Door Stop
SB-60	Stop	Door Closing (Felt) (2)
SC-70	Screw	Door Hinge Fastening (6)
SC-123	Screw	Door Lock Spring Shank and Button Fastening (2)
SC-226	Screw	Door Stop Link
C1-T-40	CONVERSION KIT (WESTERN ELECTRIC UNIVERSAL BASE REPRODUCER)	
C2-T-12	Sound Guide Roller	
C1-T-41	Main Drive Sleeve & Coupling (SC-119, Gear Fastening Screws) (2)	

PART NO.	DESCRIPTION	
ST-820	Main Drive Shaft for W. E. 7400 Sound Reprodncer	
ST-821	Main Drive Shaft for Motiograph 7500 Sound Reprodncer	
ST-828	Main Drive Shaft for Ballantyne model 6/8 Soundheads	
	<u>Note:</u> With Ballantyne RSM-64C, 34 Tooth Drive Gear use ST-744,  Standard Main Drive Shaft. Use ST-828 Shaft only with Ballantyne Old Style 5/8" Bore Drive Gear.	
W1-T-100	LOWER MAGAZINE DRIVE MOTOR ASSEMBLY (SPECIAL)	
BR-968	Bracket	Motor Mounting
CN-708	Connector	Squeeze (1/2")
MO-48	Motor	Geared Drive
NU-8	Nut	Drive Motor Assembly Fastening Screw (3)
PE-907	Plate	Motor Rubber
PE-909	Plate	Squeeze Connector Mounting
PE-1012	Plate	Motor Bracket Mounting
PY-900	Pulley	Take-Up Drive Motor
SC-78	Screw	Drive Motor Bracket Mounting (3)
SC-582	Screw	Drive Motor Fastening (4)
SC-902	Screw	Drive Pulley Fastening
SC-2062	Screw	Drive Motor Assembly Fastening (3)
WA-77	Washer	Motor Fastening Screw (8)
WA-78	Washer	Drive Motor Assembly Fastening Screw (3)
WA-247	Washer	Motor Fastening Screw (Rubber) (4)
BE-969	Belt	Take-up of Drive Motor
N1-T-103	CINE-FOCUS AIR PUMP ASSEMBLY	
CN-708	Connector	Squeeze (1/2")
CP-721	Clamp	Hose Retaining (2)
FT-130	Foot	Air Pump Mounting (4)
HE-111	Hose	Air Pump (5 Feet)
PE-954	Plate	Air Pump Mounting
PM-953	Pump	Air (Includes MO-59 Motor & FI-132 Dust Filter)
SC-608	Screw	Mounting Foot Fastening (4)
SC-1477	Screw	Air Pump Fastening (4)
WA-70	Washer	Air Pump Fastening Screw (4)
FI-132	Filter	Air Pump Dust
MO-59	Motor	Cine-Focus Air Pump
C1-T-154	ADAPTER AND COUPLING FOR WATER HOSE CONNECTOR	
AD-51	Adapter	Water Hose Connection (#836-1/4" Male)
CG-134	Coupling	Water Hose Connection (1805-1/4" Coupling)
C1-T-155	COPPER TUBING MALE COMPRESSION (1/4"x1/4" MALE)	
C1-T-160	LENS ADAPTER & CLAMP SCREW (FOR 2 25/32 LENSES)	
BU-193	Bushing	Lens (Includes PE-1040 Rubber Plate) (C1-T-160)
SC-574	Screw	Lens Bushing Clamp (2)

PART NO.

DESCRIPTION

C1-T-190	CONVERSION KIT (WESTERN ELECTRIC 208 REPRODUCER)	
C2-T-12	Sound Guide Roller	
C1-T-31	Drive-Side Door (Special)	
CR-8	Cover	Drive-Side (Lower) (Special)
GR-80	Gear	Projector Drive (Formica) (Special)
SA-795	Spacer	Projector Drive Gear
SC-796	Screw	Projector Drive Gear Fastening (6)
C1-T-200	CONVERSION KIT (WESTERN ELECTRIC 206 REPRODUCER)	
C2-T-12	Sound Guide Roller	
C1-T-31	Drive-Side Door (Special)	
C1-T-111	Spilt Pulley & Fastening Screws	
CR-8	Cover	Drive-Side (Lower) (Special)
GR-80	Gear	Projector Drive (Formica) (Special)
SA-799	Spacer	Projector Drive Gear
SC-796	Screw	Projector Drive Gear Fastening (6)
C1-T-210	CONVERSION KIT (WESTERN ELECTRIC 209/211A REPRODUCER)	
C2-T-12	Sound Guide Roller	
C1-T-21	Lower Pad Roller Arm Assembly (Special)	
C1-T-22	Lower Sprocket Stripper (Special)	
ST-809	Shaft	Main Drive (Special)
C6-T-360	WATER RECIRCULATOR ASSEMBLY (60 CYCLE)	
C1-T-361	Motor Cover	
C6-T-362	Water Drum Cover & Pump	
DR-107	Drum	Water (10 Gallon) (Height 16 3/4 - Top Opening 13 7/8)
SC-812	Screw	Motor Cover Fastening (2)
C1-T-154	Water Hose Adapter and Coupling Connection	
C1-T-155	Copper Tubing Male Compression Connector	
HE-63	Hose	Water (Specify Number of Feet Required)
C1-T-361	WATER RECIRCULATOR MOTOR COVER ASSEMBLY	
CN-91	Connector	Squeeze
CR-189	Cover	Motor
LP-34	Lamp	Pilot (4 Watt - 120 Volt)
LT-33	Light	Socket (Jewel)
SW-596	Switch	Pilot Light & Motor (Short Neck)
WA-138	Washer	Pilot Light Socket Lock



PART NO.	DESCRIPTION	
C6-T-362	WATER RECIRCULATOR DRUM COVER AND PUMP ASSEMBLY	
C1-T-223	Compression Union Assembly	
C6-T-363	Water Recirculator Drum Cover and Bracket	
CN-132	Connector	Compression (Female) (2)
IM-15	Impeller	Water Pump
MO-26	Motor	Water Recirculator Pump (60 Cycle)
NU-53	Nut	Gland (2)
NU-54	Nut	Gland Fastening Screw (2)
NU-69	Nut	Motor Fastening Screw (2)
PG-206	Plug	Button
PM-572	Pump	Water Recirculator
SC-1138	Screw	Impeller Fastening
SV-779	Sleeve	Compression (2)
TU-78	Tube	Inlet Water
TU-151	Tube	Water
WA-139	Washer	Gland Nut (4)
C2-T-401	FRONT SUPPORT FOR Long LENSES AND ANAMORPHIC ATTACHMENTS (SMALL)	
C2-T-402	Lens Support and Rod (Small)	
BK-294	Block	Lens Support and Rod Holding
NU-65	Nut	Sliding Rod Mounting
RD-107	Rod	Sliding (Long)
SC-1019	Screw	Holding Block (2)
WA-165	Washer	Sliding Rod Mounting Screw
C3-T-401	FRONT SUPPORT FOR LONG LENSES AND ANAMORPHIC ATTACHMENTS (LARGE)	
C3-T-402	Lens Support & Rod (Large)	
BK-294	Block	Lens Support & Rod Holding
NU-65	Nut	Sliding Rod Mounting
RD-107	Rod	Sliding (Long)
SC-1019	Screw	Holding Block (2)
WA-165	Washer	Sliding Rod Mounting Screw
	REFERENCE: DRAWING E-1582-1 (INSTALLATION FRONT LENS SUPPORT)	
C1-T-490	LENS LOCATE RING AND STUD ASSEMBLY	
RI-69	Ring	Lens Locate (C1-T-490)
SC-574	Screw	Lens Locate Ring Clamp
SU-995	Stud	Lens Locate Ring Guide
C1-T-520	CONVERSION KIT (FOR BALLANTYNE MODEL 9 SOUND REPRODUCER)	
SA-895	Spacer	Projector Drive Gear
SC-81	Screw	Projector Drive Gear Fastening (5)
SC-896	Screw	Projector Drive Gear Spacer Fastening (3)
WA-64	Washer	Projector Drive Gear Fastening Screw Lock (5)
WA-78	Washer	Projector Drive Gear Fastening Screw (5)

PARTS AND ASSEMBLIES FOR FORMER MODELS
CENTURY PROJECTOR MECHANISMS (C/CC - H/HH)

PART NO.	DESCRIPTION	
C1-A-44	FILM GATE SUPPORT AND TUBE (2 25/32 LENS HOLDER)	
C4-A-60	4" DIAM. LENS MOUNT ASSEMBLY (COMPLETE) (C/CC MECH.) (STYLE 1)	
C1-A-61	Focusing Screw/Shaft and Collar	
C2-A-63	Film Gate Support & Tube (4" Diameter Lens Mount)	(Style 1)
C1-A-64	Lens Tube Clamp Bracket and Pin (Front)	
C1-A-65	Lens Tube Clamp Bracket & Pin (Rear)	
C1-A-66	FILM GATE OPEN AND CLOSE HOUSING AND KNOB	
BR-191	Bracket	Focusing Screw Retaining
BR-670	Bracket	Lens Holder
EC-20	Eccentric	Film Gate Alignment
KN-45	Knob	Lens Focus
KN-52	Knob	Lens Clamp Screw/Shaft
NU-77	Nut	Lens Focus Screw Stop
PG-301	Plug	Focus Screw Retaining Bracket
SC-72	Screw	Focus and Clamp Knob Fastening (2)
SC-82	Screw	Lens Clamp Bracket Stop
SC-131	Screw	Film Gate Open and Close Knob Assembly Retaining (2)
SC-144	Screw	Film Gate Retaining Thumb
SC-678	Screw	Focus Screw Retaining Bracket Plug
SC-800	Screw	Lens Clamp Shaft/
SC-806	Screw	Lens Tube Clamp Bracket and Focus Shaft Fastening (8)
SC-1078	Screw	Film Gate Alignment Eccentric Lock
SG-21	Spring	Lens Tube Clamp Bracket Pressure
SG-999	Spring	Focus Screw/Shaft Retaining Bracket
TU-60	Tube	Lens (Front)
WA-163	Washer	Focus Screw/Shaft Thrust (2)
WA-186	Washer	Focus Screw/Shaft Nut Lock
FL-55	Flange	Lens Tube (Front)
SC-137	Screw	Lens Holder and Film Gate Bracket Retaining (4)
SC-661	Screw	Flange (Front) Fastening (6)
C1-A-66	FILM GATE OPEN & CLOSE LOCK KNOB ASSEMBLY (C/CC)	
C1-A-67	Film Gate Lock Shaft & Pin	
KN-27	Knob	Film Gate Open and Close Lock
LO-1	Lock	Film Gate Open and Close (Housing)
SC-99	Screw	Film Gate Knob Retaining
SG-14	Spring	Film Gate Open and Close Pressure
WA-135	Washer	Film Gate Lock Shaft



PARTS AND ASSEMBLIES FOR FORMER MODELS
CENTURY PROJECTOR MECHANISMS (C/CC - H/HH)

PART NO.	DESCRIPTION	
C2-BB-30	INTERMITTENT MOVEMENT ASSEMBLY (COMPLETE) (MODELS C/CC)	
C1-BB-16	Intermittent Cover and Bushings	
C1-BB-17	Intermittent Case and Bushings	
C1-BB-26	Intermittent Sprocket Pad and Arm	
C1-BB-31	Cam Thrust Bearing and Bracket	
CL-24	Collar	Starwheel Shaft Thrust Outer
CM-29	Cam	Intermittent (Includes PN-31)
GA-17	Gasket	Intermittent Case-Cover Oil
GR-7	Gear	Cam Shaft Driven (Steel)
PE-38	Plate	Stop (Large)
PE-40	Plate	Stop (Small)
PN-30	Pin	Intermittent Sprocket Taper (2)
PN-31	Pin	Intermittent Cam
SA-1321	Spacer	Cam Thrust Bracket
SC-3	Screw	Flywheel Fastening
SC-39	Screw	Starwheel and Cam Adjusting (2)
SC-69	Screw	Cam Thrust Bracket
SC-81	Screw	Cam Shaft Gear Fastening
SC-103	Screw	Starwheel Outer Thrust Collar Fastening (2)
SC-104	Screw	Intermittent Cover to Case Fastening (4)
SC-134	Screw	Stop Plate
SC-155	Screw	Intermittent Sprocket Pad Assembly Retaining
SC-1010	Screw	Intermittent Cover Oil Drain
SK-1018	Sprocket	Intermittent (Includes PN-30)
SX-107	Starwheel	Intermittent
WA-12	Washer	Cover Oil Drain Screw (Copper)
WA-65	Washer	Cover Fastening and Oil Drain Screw (Steel) (5)
WA-126	Washer	Cover Oil Drain Screw (Fibre)
WH-124	Flywheel	Intermittent
C1-BB-16	INTERMITTENT COVER AND BUSHINGS	
BU-28	Bushing	Starwheel Shaft (Oilite) (Outer)
BU-34	Bushing	Starwheel Shaft (Inner)
CR-3	Cover	Intermittent (C1-BB-16)
CU-18	Cup	Oil
GA-20	Gasket	Oil Gauge Sealing (Fibre) (2)
GG-19	Gauge	Oil Viewing
NU-10	Nut	Oil Gauge Retaining
SC-105	Screw	Starwheel Shaft Inner Bushing Fastening (3)
SC-217	Screw	Cam Shaft Adjusting Plug
WA-28	Washer	Cam Shaft Adjusting Plug Screw
C1-BB-17	INTERMITTENT CASE AND BUSHINGS	
BU-21	Bushing	Cam Shaft (Inner)
BU-40	Bushing	Cam Shaft (Oilite) (Outer)
CS-30	Case	Intermittent (C1-BB-17)
PN-32	Pin	Adjusting Pivot
SC-7	Screw	Cam Shaft Inner Bushing Fastening (3)
LUBRICATE WITH CENTURY CERTIFIED PROJECTOR OIL		
PROVEN BEST BY ACTUAL TEST---IN GALLON TINS...		

PART NO.	DESCRIPTION	
C1-BB-26	INTERMITTENT SPROCKET PAD AND ARM ASSEMBLY (COMPLETE) (STYLE 2)	
C1-BB-27	Intermittent Pad Spring Stud and Plate	(ILLUSTRATION ON PAGE 36)
C1-BB-28	Intermittent Sprocket Pad Assembly (Style 2)	
C1-BB-29	Intermittent Sprocket Pad Stud and Bushing	
AR-46	Arm	Intermittent Sprocket Pad
BL-18	Ball	Intermittent Sprocket Pad Arm (2)
KN-30	Knob	Intermittent Sprocket Pad Arm
NU-46	Nut	Intermittent Pad Adjusting Spring
SC-82	Screw	Spring Stud Plate Fastening
SC-127	Screw	Knob Fastening
SC-708	Screw	Intermittent Pad Adjusting Spring Nut Stop
SG-21	Spring	Intermittent Sprocket Pad Arm Ball (2)
SG-705	Spring	Intermittent Pad Adjusting
C1-BB-28	INTERMITTENT SPROCKET PAD ASSEMBLY (STYLE 2)	
PA-194	Pad	Intermittent Sprocket (Inner)
PA-195	Pad	Intermittent Sprocket (Outer) (2)
SA-33	Spacer	Intermittent Sprocket Pad (4)
SC-877	Screw	Intermittent Sprocket Pad Fastening (4)
WA-151	Washer	Intermittent Sprocket Pad Fastening Screw Lock (4)
C1-BB-29	INTERMITTENT SPROCKET PAD STUD AND BUSHING ASSEMBLY	
BU-27	Bushing	Intermittent Sprocket Pad Stud (C1-BB-29)
KN-24	Knob	Intermittent Sprocket Pad Stud (C1-BB-29)
PN-25	Pin	Intermittent Sprocket Pad Stud Bushing
PN-36	Pin	Intermittent Sprocket Pad Stud Knob Stop
PN-68	Pin	Intermittent Sprocket Pad Stud Knob Fastening
SU-4	Stud	Intermittent Sprocket Pad (C1-BB-29)
C1-BB-31	INTERMITTENT CAM THRUST BALL BEARING AND BRACKET	
C1-BB-11	Intermittent Cam Thrust Ball Bearing	
BR-23	Bracket	Intermittent Cam Thrust
SC-85	Screw	Intermittent Cam Thrust Bearing/Bracket Fastening
C1-BB-24	INTERMITTENT PAD ASSEMBLY (STYLE 1) (ILLUSTRATION ON PAGE #36)	
PA-69	Pad	Intermittent Sprocket (Outer) (2)
PA-70	Pad	Intermittent Sprocket (Inner) (2)
SA-33	Spacer	Intermittent Sprocket Pad (Top) (2)
SA-202	Spacer	Intermittent Sprocket Pad Stud (2)
SC-877	Screw	Intermittent Sprocket Pad Fastening (4)
SU-38	Stud	Intermittent Sprocket Pad
WA-151	Washer	Sprocket Pad Fastening Screw Lock (Top) (2)
CP-6	Clamp	Pad Stud (For C1-BB-24 Assembly)
SG-43	Spring	Pad Assembly Retaining (For C1-BB-24)
SC-83	Screw	Pad Stud Clamp Fastening
C1-D-42	SHUTTER SHAFT B. B. & BRACKET (FRONT) (2 25/32 LENS HOLDER MECH.)	
BG-9	Bearing	Shutter Shaft Ball
BR-175	Bracket	Shutter Shaft Ball Bearing (Front)
SC-127	Screw	Ball Bearing Retaining (3)

PARTS AND ASSEMBLIES FOR FORMER MODELS
CENTURY PROJECTOR MECHANISMS (C/CC - H/HH)

PART NO.	DESCRIPTION	
C1-D-58	DOUBLE SHUTTER AND FAN BLADES (OUTER) (INDOOR) (STYLE 1)	
BD-26	Blade	Shutter Fan (2)
BD-37	Blade	Double Shutter (Outer) (Indoor)
SC-94	Screw	Double Shutter/Fan Blade Fastening (6)
C3-D-58	DOUBLE SHUTTER AND FAN BLADES (INNER/OUTER) (DRIVE-IN) (STYLE 1)	
BD-564	Blade	Shutter Fan (2)
BD-568	Blade	Shutter (Inner/Outer) (Drive-In) (Style 1)
SC-94	Screw	Shutter/Fan Blade Fastening (6)
C1-D-59	DOUBLE SHUTTER AND FAN BLADE (INNER) (INDOOR) (STYLE 1)	
BD-26	Blade	Shutter Fan (2)
BD-38	Blade	Shutter (Inner) (Indoor) (Style 1)
SC-94	Screw	Shutter/Fan Blade Fastening (6)
C2-D-70	ASBESTOS AND LIGHT SHIELD ASSEMBLY (MODELS C/CC)	
C2-D-71	Asbestos Shield with Spacer and Screws	
PG-206	Plug	Light Shield
SC-51	Screw	Light Shield Assembly Mounting (2)
SC-82	Screw	Asbestos Shield Assembly Mounting (3)
SD-592	Shield	Light (Casting) (Includes PG-206)
H1-D-70	ASBESTOS AND LIGHT SHIELD ASSEMBLY (MODEL H/HH)	
C2-D-71	Asbestos Shield with Spacer and Screws	
SC-51	Screw	Light Shield Assembly Mounting (2)
SC-82	Screw	Asbestos Shield Assembly Mounting (3)
SD-1337	Shield	Light (Casting) (Non Water-Cool)
H2-D-70	LIGHT SHIELD ASSEMBLY (WATER-COOL) (MODEL	
SC-51	Screw	Light Shield Assembly Mounting (2)
SD-1338A	Shield	Light (Water-Cool)
C2-D-71	ASBESTOS COOLING SHIELD ASSEMBLY (C/CC - H/HH)	
SA-558	Spacer	Asbestos Cooling Shield Distance (4)
SC-59	Screw	Asbestos Cooling Shield Spacer (4)
SD-969	Shield	Asbestos Cooling (Rear)
SD-970	Shield	Asbestos Cooling (Front)
C2-E-10	FILM TRAP ASSEMBLY (NON WATER-COOL) (STRAIGHT) (C/CC)	
C2-E-11	Film Trap, Frame Aperture and Pin (Straight)	
A1-E-12	Lateral Guide Roller Assembly	
GU-16	Guide	Film Trap Shoe (2)
PE-5	Plate	Aperture (.600x.825)
PT-33	Pivot	Lateral Guide Roller Assembly (2)
RT-6	Retainer	Aperture Plate
SC-59	Screw	Film Trap Shoe and Guide Fastening (4)
SC-134	Screw	Lateral Guide Roller Assembly Pivot Fastening (2)
SH-15	Shoe	Film Trap (Straight) (2)
SC-137	Screw	Film Trap Assembly Mounting (3)

PARTS AND ASSEMBLIES FOR FORMER MODELS
CENTURY PROJECTOR MECHANISMS (C/CC - H/HH)

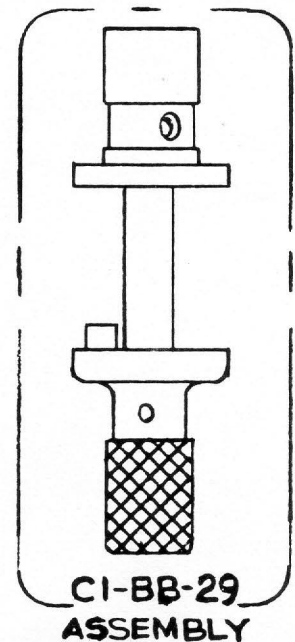
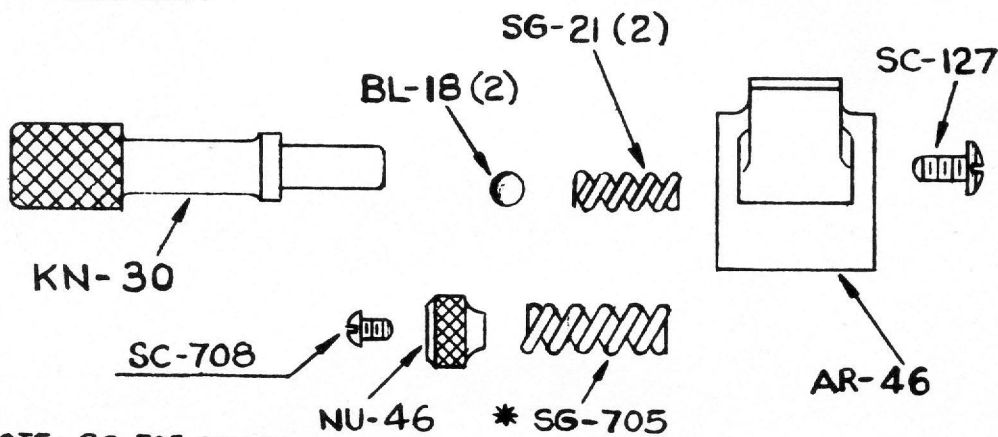
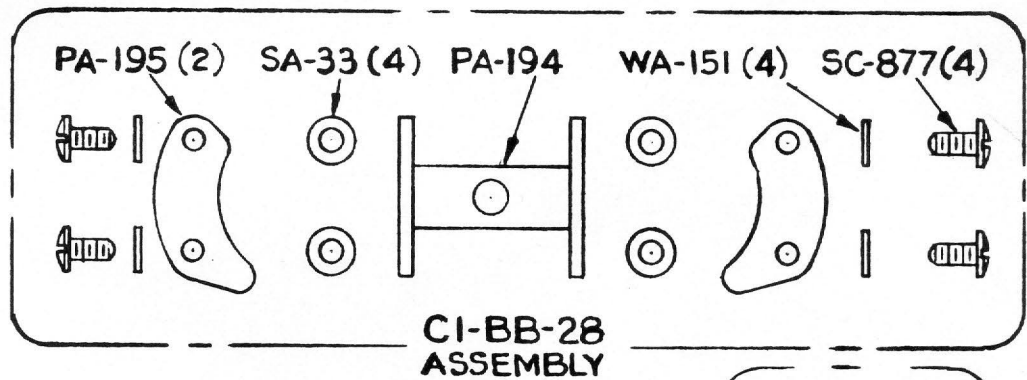
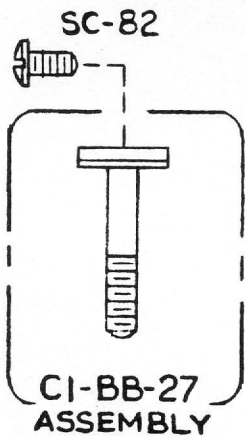
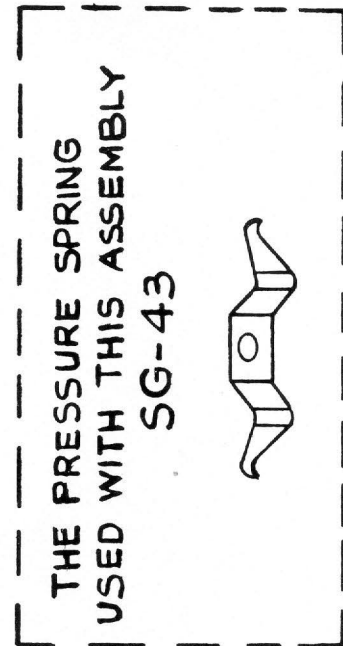
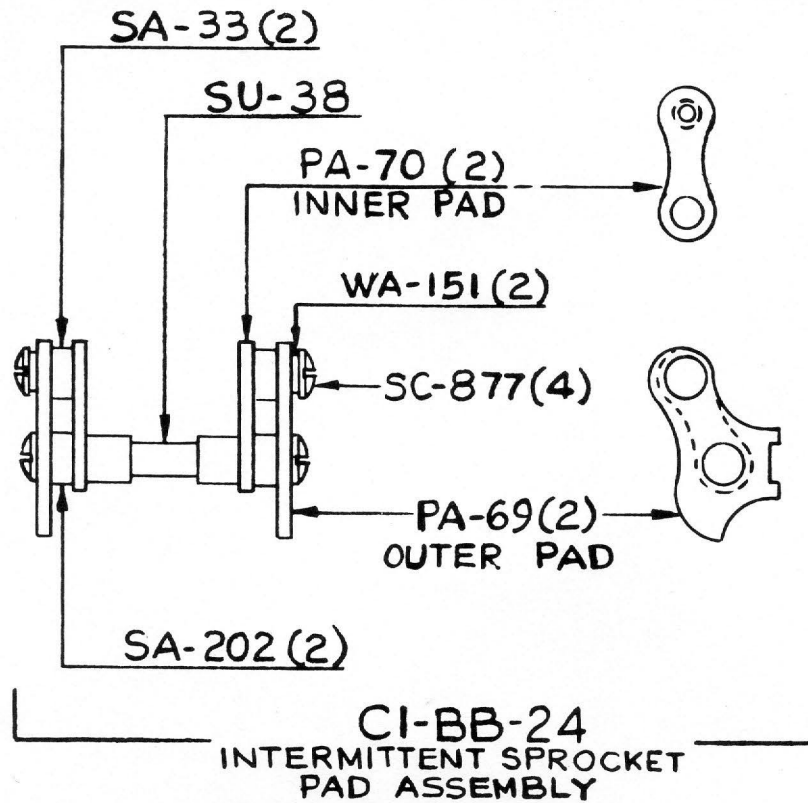
PART NO.	DESCRIPTION
C3-E-10	FILM TRAP ASSEMBLY (CURVED TYPE, (NON W/C) (C/CC - H/HH)
C3-E-11	Film Trap, Pin and Frame Plate (Non Water-Cool)
A1-E-12	Lateral Guide Roller Assembly
GU-172	Guide Film Trap Shoe (Curved) (2)
PE-652	Plate Aperture (.600x.825) (Non Water-Cool) (Curved Type)
PT-33	Pivot Lateral Guide Roller Assembly (2)
SC-75	Screw Film Trap Shoe and Guide Fastening (4)
SC-134	Screw Lateral Guide Roller Assembly Pivot Retaining (2)
SH-1257	Shoe Film Trap (Curved) (2)
H1-E-10	FILM TRAP ASSEMBLY COMPLETE (CURVED)(WATER-COOL) (C/CC-H/HH)
H1-E-11	Film Trap, Pin and Frame Plate (Water-Cool)
A1-E-12	Lateral Guide Roller Assembly
GU-172	Guide Film Trap Shoe (Curved) (2)
PT-33	Pivot Lateral Guide Roller Assembly (2)
SC-75	Screw Film Trap Shoe and Guide Fastening (4)
SC-134	Screw Lateral Guide Roller Assembly Pivot Retaining (2)
SH-1257	Shoe Film Trap (Curved) (2)
C2-E-11	FILM TRAP, PIN AND FRAME PLATE (STRAIGHT) (NON W/C) (C/CC)
PE-232	Plate Frame
PN-14	Pin Picture Aperture Stop
SC-778	Screw Frame Plate Retaining (2)
TP-1	Trap Film (Straight) (C2-E-11)
C3-E-11	FILM TRAP, PIN AND FRAME PLATE (CURVED) (NON WATER-COOL)
PE-643	Plate Framing
PN-645	Pin Aperture Stop
SC-1266	Screw Frame Plate Fastening (2)
TP-110	Trap Film (Curved) (Non Water-Cool) (C3-E-11)
H1-E-11	FILM TRAP, PIN AND FRAME PLATE (CURVED TYPE) (WATER COOL)
PE-643	Plate Framing
PN-127	Pin Water Jacket Locate
SC-1266	Screw Framing Plate Fastening (2)
TP-119	Trap Film (Water Cool) (H1-E-11)
C2-E-40	FILM GATE ASSEMBLY (COMPLETE) (STRAIGHT) (C/CC)
C1-E-41	Film Gate Plate and Studs (Straight)
NU-83	Nut Pad Adjusting Spring Stud (2)
PA-502	Pad Film Gate (Straight)
PE-180	Plate Film Gate Pad Retainer Spring (2)
SC-709	Screw Film Gate Pad Retaining Spring Fastening (4)
SC-1551	Screw Film Gate Pad Retaining Spring Plate Fastening (4)
SG-685	Spring Film Gate Pad Retaining (2)
SG-1352	Spring Film Gate Pad Adjusting (2)
SU-1353	Stud Film Gate Pad Adjusting Spring (2)

PARTS AND ASSEMBLIES FOR FORMER MODELS
CENTURY PROJECTOR MECHANISMS (C/CC - H/HH)

PART NO.	DESCRIPTION	
H1-E-40	FILM GATE ASSEMBLY (COMPLETE) (CURVED TYPE) (C/CC - H/HH)	
H1-E-41	Film Gate Plate and Studs (Curved)	
NU-83	Nut	Film Gate Pad Adjusting Spring (2)
PA-642	Pad	Film Gate Pressure (Curved)
PE-180	Plate	Film Gate Pad Retainer Spring (2)
SA-1256	Spacer	Film Gate Pad Retainer Spring (2)
SA-1272	Spacer	Film Gate Plate Inner and Outer Stop (2)
SC-709	Screw	Film Gate Pad Retainer Spring Fastening (4)
SC-1268	Screw	Film Gate Pad Retainer Spring Plate Fastening (4)
SC-1276	Screw	Film Gate Spacer Fastening (4)
SG-685	Spring	Film Gate Pad Retaining (2)
SG-1352	Spring	Film Gate Pad Adjusting (2)
SU-1353	Stud	Film Gate Pad Adjusting Spring (2)
C5-E-70	WATER JACKET, TUBES & CONNECTION BLOCK (CURVED) (C/CC - H/HH)	
BK-829	Block	Water Tube Connection (Bottom)
JC-12	Jacket	Water (C5-E-70)
PE-518	Plate	Aperture (.600 x .825)
PN-519	Pin	Aperture Stop
SC-1016	Screw	Aperture Retaining Spring Fastening (4)
SG-1013	Spring	Aperture Plate Retaining (2)
TU-167	Tube	Water (Outer)
TU-168	Tube	Water (Inner)
SC-81	Screw	Connection Block Fastening
SC-137	Screw	Water Jacket Mounting
C1-T-182	FILM TRAP ASSEMBLY (COMPLETE) (STRAIGHT) (WATER-COOL) (C/CC)	
A1-E-12	Lateral Guide Roller Assembly	
C1-T-183	Film Trap and Pin (Water-Cool) (Model C/CC)	
GU-16	Guide	Film Trap (2)
PE-232	Plate	Framing Sight
PT-33	Pivot	Lateral Guide Roller Assembly (2)
SC-59	Screw	Film Trap Shoe and Guide Fastening (4)
SC-134	Screw	Lateral Guide Roller Assembly Pivot Retaining (2)
SC-778	Screw	Framing Sight Plate Fastening (2)
SH-794	Shoe	Film Trap (Water-Cool) (Straight Gate)
C1-T-184	LIGHT SHIELD ASSEMBLY (WATER-COOL) (MODEL C/CC)	
PG-206	Plug	Light Shield
SC-51	Screw	Light Shield Mounting (2)
SD-780	Shield	Light (Water-Cool) (C1-T-184)
C2-T-260	CONVERSION KIT (STANDARD TO WATER-COOL) (STRAIGHT) (C/CC)	
C1-T-182	Film Trap Assembly (Straight Gate)(Water Cool) (Model C/CC)	
C1-T-184	Light Shield Assembly (Water-Cool) (Model C/CC)	
C4-T-421	Water Cell Assembly (Straight) (Model C/CC)	
SC-81	Screw	Connection Block Fastening
SC-137	Screw	Film Trap & Water Jacket Retaining (3)

PARTS AND ASSEMBLIES FOR FORMER MODELS
CENTURY PROJECTOR MECHANISMS (C/CC - H/HH)

PART NO.	DESCRIPTION			
C3-T-260	CONVERSION KIT (STANDARD TO WATER-COOL AND CURVED GATES)			
H1-E-10	Film Trap Assembly Complete (Water-Cool) (Curved)			
H1-E-40	Film Gate Assembly Complete (Curved)			
C5-E-70	Water Jacket, Tubes and Connection Block			
C1-T-184	Light Shield Assembly (Water-Cool)			
PE-518	Plate	Aperture (.600 x .825)		
C4-T-421	WATER CELL, TUBES AND CONNECTING BLOCK ASSEMBLY (STRAIGHT) (C/CC)			
BK-829	Block	Water Connection (Bottom)		
JC-8	Jacket	Water (C4-T-421)		
PE-518	Plate	Aperture (.600 x .825)		
PN-519	Pin	Aperture Plate Stop		
SC-81	Screw	Connection Block Fastening		
SC-137	Screw	Water-Cell Mounting		
SC-1016	Screw	Aperture Plate Retaining Spring Fastening (4)		
SG-1013	Spring	Aperture Plate Retaining (2)		
TU-167	Tube	Water (Outer)		
TU-168	Tube	Water (Inner)		
C5-T-421	WATER CELL, TUBES AND CONNECTING BLOCK ASSEMBLY (STRAIGHT) (C/CC) SAME AS C4-T-421 <u>PLUS</u> 2 SH-794 Film Trap Shoes			
C1-T-580	KIT TO CONVERT WATER-COOLED MECHANISM TO CURVED GATES (CW/CCW)			
H1-E-10	Film Trap Assembly (Water-Cool) (Curved)			
C5-E-70	Water Jacket and Connection Block (Curved)			
H1-E-40	Film Gate Assembly (Curved)			
C1-T-590	KIT TO CONVERT STANDARD MECHANISMS (C/CC) TO CURVED GATES			
C3-E-10	Film Trap Assembly (Non Water-Cool) (Curved)			
H1-E-40	Film Gate Assembly (Curved)			
<u>APERTURE PLATES (STANDARD AND WATER-COOL) (MODELS C/CC - H/HH)</u>				
<u>STANDARD</u>		<u>WATER-COOL</u>		
<u>Straight Gate</u>	<u>Curved Gate</u>	<u>Straight and Curved Gates</u>	<u>Aspect Ratio</u>	<u>Aperture Size</u>
PE-5	PE-652	PE-518	1.375:1	.600 x .825
PE-5-E1	PE-652-E1	PE-518-E1		Blank
PE-5-E2	PE-652-E2	PE-518-E2		Pin Hole
PE-5-E3	PE-652-E3	PE-518-E3	2:1 (Wide Screen)	.412 x .825
PE-5-E4	PE-652-E4	PE-518-E4	1.85:1	.445 x .825
PE-5-E5	PE-652-E5	PE-518-E5	1.75:1	.470 x .825
PE-5-E6	PE-652-E6	PE-518-E6	1.66:1	.495 x .825
PE-5-E7	PE-652-E7	PE-518-E7	1.375:1 (Und.)	.581 x .703
PE-5-E8	PE-652-E8	PE-518-E8	1.75:1/1.85:1 (Und.)	.420 x .800
PE-5-E9	PE-652-E9	PE-518-E9	1.66:1 (Und.)	.470 x .800
PE-5-E12	PE-652-E12	PE-518-E12	2.35:1 (Anamorphic)	.715 x .825
PE-5-E13	PE-652-E13	PE-518-E13	2.35:1 (Und.)	.675 x .800
PE-5-E14	PE-652-E14	PE-518-E14	2:1	.715 x .715
PE-5-E15	PE-652-E15	PE-518-E15	2:1 (Und.)	.650 x .650
PE-5-E16	PE-652-E16	PE-518-E16	2.35:1 (Und.)	.650 x .775



* NOTE: SG-705, COILED
TYPE PRESSURE SPRING
USED WITH CI-BB-26
ASSEMBLY.

Proven Best



HIGHEST QUALITY STANDARDS

For Maximum Performance — Minimum Wear — Long Life

CENTURY PROJECTOR CORPORATION

NEW YORK 19, N. Y.